



Elm Grove NEWS-

INDEPENDENT



Volume 4, Number 10

Serving Elm Grove, Wisconsin

DECEMBER 2016



Photo by James L.W. Bain / EGNi

A PORTRAIT OF ELM GROVE – NOVEMBER 2016. This was the almost mystical, picture-postcard scene one evening at twilight, looking east along Watertown Plank Road at the intersection of Elm Grove Road: The glimmering lights of street lamps... an abundance of Holiday decorations ... the facades and rooftops of quaint shops and residences... a spectacular, multi-colored sky with full moon overhead.

Elections 2017: Nominations for Trustees Sought

By Lisabeth Passalis-Bain / elmgrovenews@yahoo.com

Local residents interested in taking more active leadership roles regarding current and future issues of importance to our community may wish to consider running for a seat on the Village of Elm Grove Board of Trustees next year.

A Primary Election, if needed, will be held on Tuesday, February 21, 2017; the Spring Election is set for Tuesday, April 4.

The seats up for election are those of Village President **Neil Palmer**, and Trustees **Patty Kujawa**, **Thomas Michalski**, and **Katy Cornell**. The Village President and Trustees serve two-year terms and receive

no financial compensation.

The first day to circulate nomination papers is December 1, 2016. No less than 20 and no more than 100 signatures are required. All forms are available at Village Hall and on the Village website: www.elmgrovi.org (under Departments, Clerk, Elections).

Nomination Papers, Declaration of Candidacy, and a Campaign Registration Statement all must be filed at Village Hall no later than 5:00 p.m. on Tuesday, January 3, 2017. Call (262) 782-6700 for further information.

Inside This Issue

- * Reinders Re-development Project UPDATE – Page 7
- * Remembering a “Sweet” Elm Grove Business . See Past Times – Page 4
- * ADs to inspire you to SHOP SMALL / LOCAL & “All the NEWS there’s room to print!”

ADVERTISE!

Promote your
Products & Services
within 53122
& surrounding
communities!

To request a **RATE SHEET**,
e-mail elmgrovenews@yahoo.com
or call **(262) 782-6193**



*****ECRWSS*****
Postal Customer
Elm Grove, WI 53122

PRSRT STD
US POSTAGE PAID
Elm Grove, WI
Permit No. 30

Elm Grove
News-Independent LLC

Owner
Editor & Publisher
Lisabeth Passalis-Bain

News & Advertising
elmgrovenews@yahoo.com

(262) 782-6193

Graphic Designer
Barbara Kolb

Photography
James L.W. Bain

Assistant to the Publisher
Christos Passalis-Bain

Published monthly.


Distributed via the U.S. Postal Service to every Residence, Business & P.O. Box in Elm Grove, Wisconsin 53122, with additional copies available at locations in Elm Grove & neighboring communities.

Mailing address:
Elm Grove News-Independent
P.O. Box 372
Elm Grove, Wisconsin
53122-0372

Copyright 2016 by
Elm Grove News-Independent LLC

All rights reserved.
Any reproduction without written permission from the Publisher is prohibited.

"I Know Where You Live!"



Lisabeth
Passalis-Bain

"Peace on Earth..."

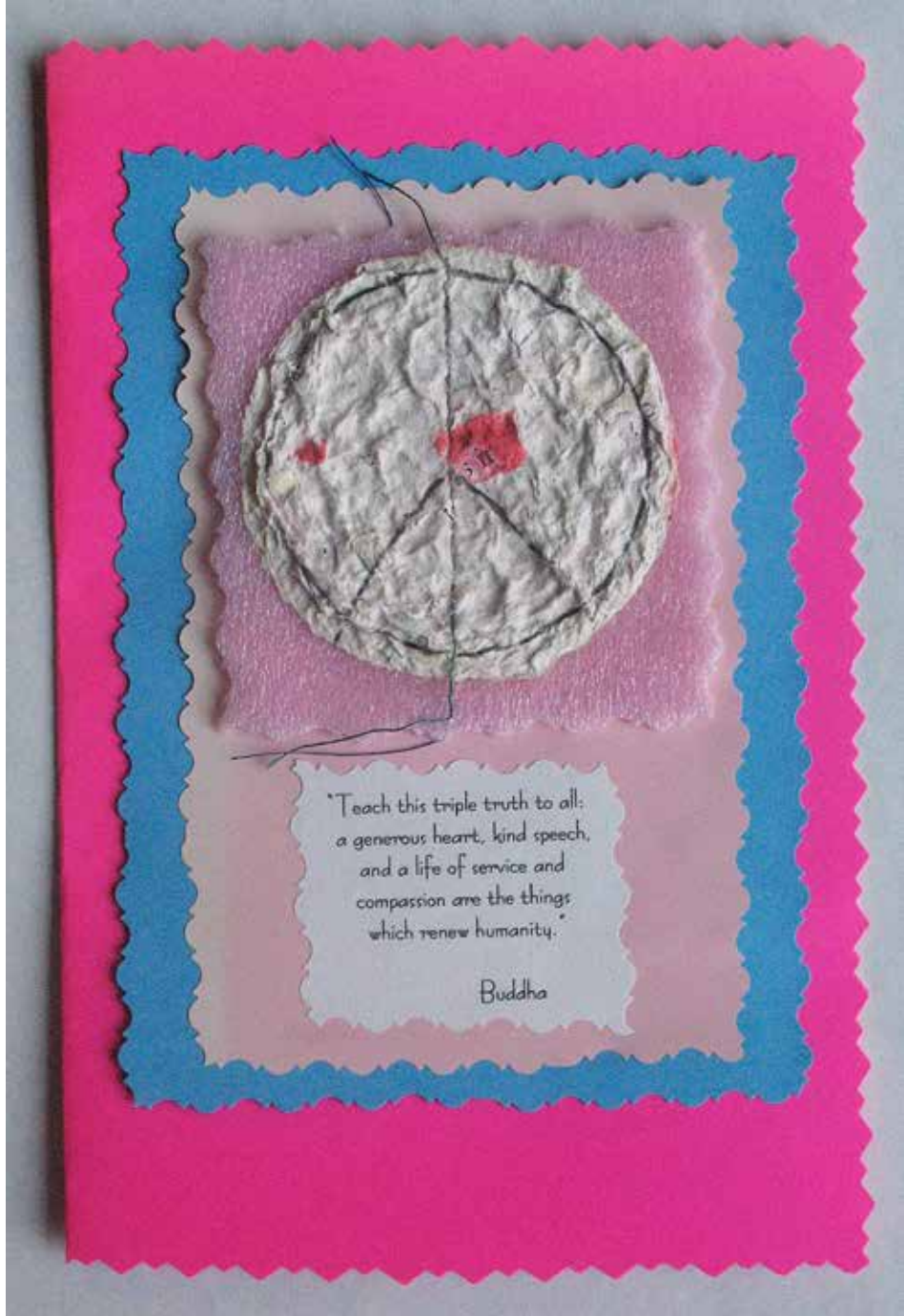
Last year (December 2015 issue – EGNI) I filled the entire top portion of Page 1 with "Variations on the Theme of Peace" — a series of hand-made paper and watercolor peace symbols that I created in the last several years to affix to a portion of my hand-made cards. (See image at right.) That front cover was a direct response to the incidents of violence in Paris and around the world in the weeks prior.

This year our Front Page is filled with a beautiful and tranquil image of the downtown area of our quaint Village of Elm Grove where Peace is not a distant "hope" but an actuality almost every day of the year. World Peace is, of course, a lofty goal, but a wonderful one for which to strive. N'est-ce pas? (Isn't it?)

So here's a challenge: What can we do within our homes, our communities, within ourselves to foster Peace in our country and encourage those in parts of the world who cling to the hope that Peace, in some form, may someday be in reach for them, as well?

"You may say I'm a Dreamer.... but, I'm not the only one. I hope someday you'll join us and the World will live as One."

John Lennon (& Me, too!)



PEACE CARD

by Elisabeth Passalis-Bain

(Hand-made paper, colored paper, pink foam sheet, newsprint, black thread.)



**elements
massage®**

Gift Card Days

Finally, a gift card that's actually personal.

Tis the season to be stressed. Give the gift of a wonderfully handcrafted massage experience and make this a truly blissful holiday for someone you love.

One Hour Massage Gift Card Sale	
MEMBERS	NON-MEMBERS
\$59 Gift Cards	\$79 Gift Cards

Elm Grove
262.754.3850
12920 W Bluemound Rd
2 Miles East of Brookfield Square Mall
elementsmassage.com/elm-grove

Massage session includes time for consultation and dressing. Each Elements Massage™ studio is independently owned and operated.

Happy Holidays
from My Family to Yours!

LIKE SANTA
Fazio's
DELIVERS

It is hard to believe the holidays are just around the corner! Fazio's has spent hours crafting THREE premium Belgian Chocolate gifts perfect to delight everyone on your list.

The sheer joy of enjoying a decadent array of truffles are guaranteed to have your gift recipient yearning for more!

Gorgeous Candy Cane Gift Boxes filled with exquisite gourmet truffles are the PERFECT hostess gift!

Fazio's Offers Delicious Options To Delight Everyone On Your Holiday List!



Three Varieties For Shipping! • Crazy About Christmas! • Nuts About The Holidays! • Truffle Tidings!

CALL: 262-923-7166
TO PLACE YOUR ORDER TODAY

Fazio's
Small Portions • Great Price

Fazio's Tasting Menu is available at:
www.FaziosChocolate.com/tasting-menu
13425 Watertown Plank Rd. Suite 7 Elm Grove, WI 53122

Attention Business Owners!

Make a profitable "New Year's Resolution"
to **ADVERTISE** your Products & Services
to Readers in Elm Grove & surrounding communities!

To request a RATE SHEET,
E-mail: elmgrovenews@yahoo.com
Call (262) 782-6193

Business Directory

*** Acupuncture**

Hughes Acupuncture Clinic
Dr. William Hughes, PhD. DIPL. Ac
* Issues we treat: back pain, headaches, stress, anxiety & more.
Located in the Mayfair Medical Center
10625 West North Avenue, LL3
Wauwatosa, WI 53226
(414) 607-0900
www.HughesAcupuncture.com

*** Bakery / Café**

Crumby Art Bakehouse and Cakery

Located in Village Court Plaza
890 Elm Grove Rd., Elm Grove
(south of Sendik’s; north of Sunset Playhouse)
(262) 794-3051
www.CrumbyArtBakehouseCakery.com

*** Community Organizations**

Sunset Playhouse
800 Elm Grove Road, Elm Grove
(262) 782-4430 (Box Office)
www.SunsetPlayhouse.com
“Let us entertain you!”

*** Dentist**

Van Westen Orthodontics
Luciana Van Westen, DDS, MS
12888 W. Bluemound Rd., Elm Grove
vwbraces.com **(262) 439-8233**
Where Smiles Come Together for a Lifetime

SHOP LOCAL
& SUPPORT
OUR VALUED
ADVERTISERS!

*** Financial Services**

Edward Jones
Jim Lemmenes, Financial Advisor
780 W. Elm Grove Road, Elm Grove
(262) 785-0516
jim.lemmenes@edwardjones.com

*** Hearing Aids & Testing**

Complimentary Hearing Evaluations & Service
B.S. Wisniewski Hearing Centers
13000 W. Bluemound Rd., Elm Grove
(262) 784-0063

4847 W. Forest Home Ave., Greenfield
(414) 321-2020

Call Today! **www.bswhearing.com**

*** Home Improvement**

Integrity Services
Scot W. Stark – Elm Grove resident
(414) 333-7285
Painting and refinishing, general repairs, installations and property maintenance.

*** Insurance**

Woller-Anger & Company, LLC
930 Elm Grove Rd., Elm Grove, WI 53122
(262) 789-2500
“Building Relationships...
Insuring Success!”

*** Real Estate**

M3 Realty
Real Estate Sales & Consultation

890 Elm Grove Road
In the Village Court
Ben Mullikin **(414) 305-5863**
Martin Mullikin **(262) 853-1427**
Pat Mullikin **(414) 305-1949**
www.m3realty.com
“You know us! We’re Your Neighbors!”

*** Tailoring / Alterations**

New Look Tailoring
13450 Watertown Plank Rd., Elm Grove
Yelena Dorshak **(262) 641-5182**
www.newlooktailoring.net
NEW HOURS: Tues. & Wed. 10 a.m.-6 p.m.;
Thurs.& Fri. 9 a.m.-5 p.m.; Sat. 10 a.m.-2 p.m.
Closed Sunday & Monday

Add **YOUR**
Business / Organization
LISTING!
Just \$5 per line
(5 line minimum / per issue)
Call (262) 782-6193
E-mail: elmgrovenews@yahoo.com


Imperial Hair Care
of Elm Grove

Open nightly ‘till 6
4 on Saturday
Closed Sunday
Late on Wednesday

13425 Watertown Plank Rd.
In the Elm Grove Park & Shop

(262) 784-4241
Evening Appointments Available

Elm Grove
“Holiday Party” Plates
By Caroline’s Catering



Finger Foods (appetizers)
* Cheddar Pecan Puffs
* Marinated Veggie Skewers*
* Zesty Lemon-Herb Olives*
* Brie/Apricot Filo Cup

Dainty Desserts (mini)
* Lemony Lemon Bars
* Shortbread Fingers
* Raspberry Almond Squares
* Pecan Caramel Turtledoves**
**Gluten Free

\$19.00–\$24.00 per plate
(18–24 servings/plate)
ORDER AHEAD
CALL (262) 784-1094

Peace to Justice

Crime Prevention Tips from the EGPD

- * Editor’s Note: **PLEASE!!! LOCK YOUR VEHICLES** (even those parked on your property / driveway) & **DO NOT LEAVE KEYS IN THE IGNITION** when the vehicle is unattended!
- The Elm Grove Police Department has responded to several incidents in recent weeks regarding unlocked vehicles parked at Elm Grove residences. Not only were some vehicles stolen, but so were various valuables left within them. Play it safe and avoid becoming a victim.
- While Holiday shopping...**
- * STAY ALERT! Be tuned-in to your surroundings; don’t be taken by surprise. Be aware and prepared, even in your own neighborhood.
 - * STAND TALL! Walk confidently, don’t show fear, and don’t look like a victim.
 - * TRUST YOUR INSTINCTS! If you feel uncomfortable in a place or situation, leave right away and get help if necessary.
 - * Stay alert to your surroundings and the people around you.
 - * Shop with a friend, there is safety in numbers.
 - * Avoid carrying large amounts of cash. Pay for purchases with a check, credit or debit card.
 - * Women: If you must carry a purse, do not wrap the straps around your arms or shoulders. Carry a clutch purse tightly under your arm or wear a fanny pack.
 - * Men: Do not carry a wallet in a back pocket. It should be placed in a front pocket of your pants for safety.
 - * Be alert that crooks look for the “high dollar” shopping bags with your

- purchases. When possible, slip bags/ purchases in a plain, nondescript bag.
 - * Watch purchases while eating in mall food courts; bags can easily be switched or taken.
 - * Educate your children about what to do if they are lost, as well as “stranger danger”.
 - * Have your car keys ready in hand before leaving the store.
 - * Place purchases in the trunk of your vehicle or cover them so they are “out of sight” to avoid theft.
 - * Try not to shop until the store closes. Remember, fewer people are present at this time.
- Have a Safe & Enjoyable
Holiday Season!

Remember, Drink Responsibly
& Drive Safely.

Direct comments or crime prevention questions / concerns to the Elm Grove Police Department at (262) 786-4141. In case of Police / Fire / Medical Emergency, call 9-1-1.

Elm Grove’s Own
Premier Fine Arts Landscape Painter

RICHARD W. PATT
announces an unusual large stock
of all-original
Wisconsin landscape paintings

Mr. Patt’s studio is located in downtown
Elm Grove at Mill Place

Studio #250 on the second floor behind Great Harvest Breads
Directly above The Ottoman Society Re-Sale Fine Furnishings

Award-winning paintings in many sizes
from 8 x 10 inch to 4 x 5 feet

View the paintings by appointment any day, every day,
at your convenience.

Call Richard @ 414-771-7460 or 414-839-6315

Or: send him an email and he will send you a return email
containing a representative sample of available paintings:
rpatt@wi.rr.com

GIVE AN ORIGINAL PAINTING THIS CHRISTMAS!

Past Times: I REMEMBER...

The Niemann’s Candies Shop on Watertown Plank Road

By Stephen K. Hauser

Niemann’s is a well-known name in chocolates and candies in southeastern Wisconsin, and since they ship their products to all points east and west, throughout the United States as well. What many Elmbrook residents may not know, however, is that the Wauwatosa-based confectioner has some strong roots in the Village of Elm Grove. The Niemann family has resided in the village over seven decades, and I can still recall when they opened a small candy shop on Watertown Plank Road in 1959 to serve Elm Grove customers.

Niemann’s Candies can trace their beginnings back to 1919 when **Frederick Niemann** opened the Colonial Sweet Shop, a purveyor of candy and ice cream, next door to the Colonial Theater near 60th and Vliet streets in Milwaukee. In the 1930s, the business moved to Underwood Avenue in Wauwatosa and Fred’s son, **Bill**, joined the firm, helping out where he could and learning the candy business from scratch from his innovative father. Bill was not afraid to tweak his dad’s family recipes, turning Fred’s homemade toffee into Niemann’s Almond Butter Toffee, still a signature item in their catalogue today. He also began making hand-pulled candy canes during the Christmas season, and was noted for creating some as tall as a full-grown man! Students at nearby Wauwatosa High School (including some from Elm Grove, as there was as yet no Elmbrook school system and no Elmbrook high schools) were known to skip lunch at school to visit the shop. A few will still admit spending their lunch money on Niemann’s candies, bypassing a more conventional meal.

Bill Niemann joined the U.S. Navy during World War II, serving aboard a P.T. Boat in the Pacific theater. On returning to Milwaukee, he took a job at Kearney & Trecker, but still maintained an interest in the candy business.

In 1953, Bill and his wife, **Emily**, built a home in Elm Grove, and raised two sons and two daughters who attended Leland and St. Mary’s schools. The family joined St. Mary’s Visitation parish and were active in the campaign to construct the new sanctuary on Church Street. Bill volunteered as an athletics coach at St. Mary’s school, and also became a founding member of the Elm Grove Volunteer Fire department in 1956. He served for decades alongside the likes of **Ray and Hunz Reusch**, **Carl “Red” Meyer**, **Gilbert Bolle** and **Ken Blaedow**, battling blazes in Elm Grove, Brookfield, Wauwatosa, Butler and New Berlin.

As an Elm Grove resident, Bill decided to open a new Niemann’s Candies location in the village, as a small space became available at 13340 Watertown Plank Road, the former site of **George Menke’s** Rexall Pharmacy. An earlier fire on the premises had caused damage that required remodeling of the interior of the structure. Wauwatosa Realty had an office in the building in 1956-57, as did Florentine’s Imports. The eastern portion of the old drug store was now separated from the rest by a wall, creating a tiny stall with a side-door entrance, just the right size for a small candy counter. Bill Niemann joined the Elm Grove Business Men’s Association, and deputized his son, **Bill Jr.**, then a student at Brookfield High School (now Brookfield Central) to man the counter after school and on Saturdays.

The idea behind the tiny shop was a good one, and it introduced many area



Photo from the collection of Stephen K. Hauser

Niemann’s candy shop, at what is now 13320 Watertown Plank Road, is shown in this May, 1959 photograph. The entrance to the store is on the east side of the building, and the narrow store only extends as far to the west as does the striped awning above the window.

families to the unique Niemann’s family recipes. The limited quarters did not allow any room for expansion, however, and Bill decided to close the little store around 1962. Niemann’s would concentrate its efforts on its Wauwatosa location where candy was not only sold, but was made on site.

their customers have become friends and represent generations of satisfied shoppers. Some who have moved from the area still call to have special orders shipped to them. It makes one wonder how many of them

are aware that this popular Wauwatosa candy also has some Elm Grove roots?

Stephen K. Hauser is a long-time Elm Grove resident, a college history professor and the author of books and articles about local history.

The former Niemann’s Candies location in Elm Grove now became the home of the Mouse House, a small gift shop that soon moved to larger quarters elsewhere. “**Pops**” was the next tenant, a shop that sold candy bars and chewing gum as well as trading cards and novelties like trolls and plastic Purple People Eater statues to village youngsters. As an added inducement for the kids to hang out, Pops also boasted a Coke machine jammed against the tiny store’s western wall. (I have been trying for years to remember who Pops was, but in vain. If anyone thinks they know, please fill me in.) As a boy, my family and I patronized every one of these various shops, and I vividly recall how small they all seemed, even to a youngster.

In the 1990s, the building was again remodeled and the interior wall that created the small stall at the eastern end was removed. It has since become home to an ongoing variety of shops, eateries and confectioners, including Plank Road Antiques, the Chocolate Swan, Apples of Eden, Le Cakery, and, currently, Sweet Tooth. The address was amended to 13320 Watertown Plank Road, but it still represents one of the most quaint and historic properties in the village’s downtown area.

Niemann’s Wauwatosa location, meanwhile, was relocated to 7475 Harwood Avenue on the east end of Wauwatosa’s downtown village in 1970. Bill Niemann turned the business over to his son, **Jim**, in 1986, but still remained involved for many more years. He passed away on September 23, 2002 at age 80. His funeral Mass at St. Mary’s Visitation Church was attended by family, friends, neighbors and longtime customers who wished to pay their respects.

Today, Niemann’s Candies still operates at its Harwood Avenue location. Many of

MAKE THE HOLIDAYS
MERRY ^{AND} BRIGHT
BUY \$25 IN GIFT CARDS,
GET A FREE VALUE BASKET
FOR A LIMITED TIME ONLY




Elm Grove
15280 W. Bluemound Rd
(262)784-4470

FLAVOR OF THE DAY
December 2016

1 Red Raspberry

2 Cookies & Cream

3 Bonfire S'mores

4 Salted Double Caramel Pecan

5 Peanut Butter Cup

6 Andes Mint Avalanche

7 Cherry Chocolate Chip

8 Turtle

9 Chocolate Covered Strawberry

10 Snickers Swirl

11 Butter Brickle

12 Caramel Cashew

13 Double Marshmallow Oreo

14 Egg Nog Brickle

15 Chocolate Oreo Volcano

16 Really Reese's

17 Twix Mix

18 Cherry Cheesecake

19 Caramel Turtle

20 Nestle Crunch Swirl

21 Double Strawberry

22 Salted Double Caramel Pecan

23 Butter Pecan

24 Turtle

25 Closed - Merry Christmas

26 Just Drummy

27 Oreo Overload

28 Raspberry Cordial

29 Chocolate Cheesecake

30 Cookie Dough Craving

31 Chocolate Caramel Twist

Calendar of Events for December 2016

Friday – DECEMBER 2

***Kiwanis Club of Elm Grove – Golden K**
Meeting – 9:30 a.m. @ St. Mary’s Senior Center
13000 Juneau Blvd., new members/ guests welcome.
Call Mike (262) 786-1677.

Saturday – DECEMBER 3

***Elm Grove Woman’s Club**
Annual Holiday Gala: “Chandelier Christmas...
An Evening with Frank (Sinatra)”. A portion of the
proceeds will be donated to the Village of Elm Grove
for an ease of access/handicapped door into the
Library. (262) 782-5930.

Sunday – DECEMBER 4

***Friends of the Elm Grove Library (FOEGL)**
Presents its 22nd annual fundraising event: “Lights of
Love” to benefit the Elm Grove Public Library, 3:30
to 5:30 p.m. at Village Hall. Includes children’s crafts,
story time with Mrs. Claus, model train exhibit, and
a visit from Santa. Caroling & tree lighting ceremony
begins at 4:45 p.m., followed by refreshments in the
Village Courtroom.



Monday – DECEMBER 5

***Village of Elm Grove Plan Commission**
Meeting – 7 p.m. @ Village Hall.

Tuesday – DECEMBER 6

***Elm Grove Woman’s Club**
Meeting: 11 a.m. (social); 11:30 a.m. (business);
Noon (lunch), followed by performance of
Holiday music by the EGWC Chorus.
(262) 782-5930; www.egwc.org.
***Village of Elm Grove Building Board**
Meeting – 5:30 p.m. @ Village Hall.

Wednesday – DECEMBER 7
PEARL HARBOR DAY

***Reinders Development – AD Hoc Committee**
Meeting – 6 p.m. @ Village Hall. Open to Public.
Agenda: www.elmgrovewi.org (262) 782-6700.



Thursday – DECEMBER 8

***OWLS (Older- Wiser – Livelier – Seniors)**
Sponsored by Community United Methodist Church,
14700 Watertown Plank Road, Elm Grove – Annual
Holiday Luncheon & Program: “Celebrate the
Holidays” / Civic Broadway Singers.
Contact Carolyn @ (262) 628-7761.
***Village of Elm Grove Public Safety Committee**
Meeting – 6 p.m. @ Village Hall.

Friday – DECEMBER 9

***Kiwanis Club of Elm Grove – Golden K**
Meeting – 9:30 a.m. @ St. Mary’s Senior Center
13000 Juneau Blvd., new members/ guests welcome.
Call Mike (262) 786-1677.
***Milwaukee Choristers**
Concert: “The Marvel of This Night” @ St. Mary’s
Visitation Parish, 1260 Church St., Elm Grove – 7:30
p.m. Tickets available @ milwaukeechoristers.org.
(414) 354-1933. (See Story – Page 6.)

Saturday – DECEMBER 10

***Milwaukee Choristers**
Concert: “The Marvel of This Night” @ St. Mary’s
Visitation Parish, 1260 Church St., Elm Grove – 7:30 p.m.

Tuesday – DECEMBER 13

***School District of Elmbrook Board of Education**
Meeting – 6 p.m. @ Central Administration Offices,
13780 Hope St., Brookfield. Open to Public.
(262) 781-3030.

Thursday – DECEMBER 15

***Village of Elm Grove Recreation Committee**
Meeting – 5:30 p.m. @ Village Hall.

Friday – DECEMBER 16

***Kiwanis Club of Elm Grove – Golden K**
Meeting – 9:30 a.m. @ St. Mary’s Senior Center
13000 Juneau Blvd., new members/ guests welcome.
Call Mike (262) 786-1677

Saturday – DECEMBER 17

***Elm Grove Woman’s Club & Elm Grove Junior Guild**
present “Brunch with Santa” — 10 a.m. to Noon @
EGWC Clubhouse, 13885 Watertown Plank Road.
Adults: \$10.50 / Children: (ages 1-9) \$8 / Infants:
Free. Please register by December 11 @
[http://elmgrovejunorguild.org/events/brunch-with-](http://elmgrovejunorguild.org/events/brunch-with-santa/)
[santa/](http://elmgrovejunorguild.org/events/brunch-with-santa/) or mail a check to: Elm Grove Junior Guild,
P.O. Box 343, Elm Grove, WI 53122-0343.

Monday – DECEMBER 19

***Village of Elm Grove Library Board**
Meeting – 4:30 p.m. @ Village Hall
Agenda: www.elmgrovewi.org.

Tuesday – DECEMBER 20

***Village of Elm Grove Building Board**
Meeting – 5:30 p.m. @ Village Hall
Agenda: www.elmgrovewi.org.

Wednesday – DECEMBER 21
FIRST DAY OF WINTER



Friday – DECEMBER 23

***Kiwanis Club of Elm Grove – Golden K**
Meeting – 9:30 a.m. @ St. Mary’s Senior Center
13000 Juneau Blvd., new members/ guests welcome.
Call Mike (262) 786-1677.

Saturday – DECEMBER 24
HANUKKAH BEGINS

Sunday – DECEMBER 25
MERRY CHRISTMAS!



Monday – DECEMBER 26

***Village of Elm Grove Finance & Licensing Comm.**
Meeting – 7 p.m. @ Village Hall – Park View Room
***Village of Elm Grove Board of Trustees**
Meeting – 7:30 p.m. @ Village Hall Court Room
Agenda: www.elmgrovewi.org.

Tuesday – DECEMBER 27

***School District of Elmbrook Board of Education**
Meeting – 6 p.m. @ Central Administration Offices,
13780 Hope St., Brookfield. Open to Public.
(262) 781-3030.

Friday – DECEMBER 30

***Kiwanis Club of Elm Grove – Golden K**
Meeting – 9:30 a.m. @ St. Mary’s Senior Center
13000 Juneau Blvd., new members/ guests welcome.
Call Mike (262) 786-1677.

Saturday – DECEMBER 31
NEW YEAR’S EVE


CALENDAR SPONSORED BY:

STEVE WETTSTEIN
"STEVE THE BARBER"
OF IMPERIAL HAIR CARE OF ELM GROVE

WORKING TUESDAYS & WEDNESDAYS,
8 A.M. TO 6 P.M.

(262) 784-4241

Give a gift of
TRAVEL!



SAVE
\$125 per
person!

Use code
ADV13LH
by 12/30

Country Travel
DISCOVERIES
TRAVEL EXPERIENCES: PERSONALIZED, DIFFERENT, REAL.

Proud to be locally owned and operated!

262-923-8120
www.CountryTravelDiscoveries.com



**St. Mary’s
Thrift Shop**

“Find your hidden treasure here!”

13150 Juneau Blvd., Elm Grove • 262-784-6644

BLESSED ADVENT AND MERRY CHRISTMAS!!

Celebrate the season in style! We have **BEAUTIFUL** Christmas decorations, **GORGEOUS** holiday clothing and furs, as well as something **LOVELY, FUN,** or **UNIQUE** for everyone on your gift-giving list. And don’t forget us for hostess gifts either!

*** FEAST DAY SPECIAL – Thursday, December 6: SOLEMNITY OF THE IMMACULATE CONCEPTION** — Celebrate by taking **50% OFF EVERYTHING in the store!** (No other discounts apply.)

*** Enjoy 20-50% off RED tagged items all month long!** Plus check out our website for FLASH SALE SPECIALS! stmaryeg.org/thrift-shop

CLOSED: Dec. 24 and Dec. 26
OPEN: Monday, Tuesday, Friday: 9 a.m.–4 p.m.; Thursday: 9 a.m.–7 p.m.; Saturday: 9 a.m.–Noon
Now accepting Visa & Mastercard.

Senior Citizen
Discount:
20% off entire
purchase
**EVERY
TUESDAY!**

Annual Quilt Sample Sale



Saturday, December 10
10 a.m. to 4 p.m.

Sunday, December 11
Noon to 4 p.m.

Patched Works, Inc.
13330 Watertown Plank Road
Elm Grove, WI 53122
(262) 786-1523
www.patchedworks.com

Clubs & Organizations



Graphic courtesy of Milwaukee Choristers

Friday, December 9 & Saturday, December 10, 7:30 p.m. at St. Mary’s Visitation Parish, 1260 Church St.

Milwaukee Choristers to Perform in Elm Grove

Celebrate the awe-inspiring aspects of Christmas Eve with music performed by the 75 voices of the Milwaukee Choristers, one of southeastern Wisconsin’s premier community choruses, under the direction of **Dr. James B. Kinchen, Jr.**

The concert will be followed by a reception with Christmas cookies, punch and holiday raffle featuring gift cards to Milwaukee hot spots, tickets to cultural and sporting events and more.

Non-perishable food items will be collected. American Sign Language interpreting will be offered on Friday.

Tickets and additional information (including audition opportunities) are available at milwaukeechoristers.org.

Enjoy **Carl Schalk’s** “Before the Marvel of This Night,” **Wolfgang Amadeus Mozart’s** “Gloria” from his “Mass in C Major”, a delightful arrangement of “Twas the Night before Christmas”, music by **John Rutter**, **William Levi Dawson**, **Jester Hairston** and **William Mathias**, plus other holiday favorites and sing-along carols.

News’ Hounds & other beloved creatures



Photo courtesy of Elmbrook Humane Society

Bandit and Dante

Adopt a Pet at the Elmbrook Humane Society

By Heather Gehrke

Who needs twice the love? **Bandit** and **Dante** do, and you do, too! This dynamic duo is looking for a forever home together — that is right, they have spent their lives together and want to continue to. Do you have room in your life for two affectionate, funny, awesome felines? If so, pay a visit to meet them — the best part is they have each other when you are not able to be

with them and you will have two snuggly felines to comfort you when you are home.

The Elmbrook Humane Society is located at 20950 Enterprise Avenue, Brookfield, just off Barker Road. Visit www.ebhs.org, call (262) 782-9261, or stop by for more information.



Photo courtesy of St. Mary’s Visitation

St. Mary’s students at their recent Food Drive.

St. Mary’s School Gathers Food for Those in Need

By Gary Newman, SMV Theology Teacher

St. Mary’s Visitation students held their annual “Thanks-for-Giving” food drive. Students in grades K3–8 were each assigned a particular Thanksgiving food item by grade, which they brought

to school to add to the collection. SMV eighth grade students helped assemble the Thanksgiving meal boxes, which were delivered to families in need in the St. Mary’s Visitation community.

Kiwanis Club Members Raise \$ for Salvation Army, Help Stock Area Food Pantry

By Jerry McCormick

The Elm Grove Kiwanis Golden K Club have rung bells for the Salvation Army Red Kettle fund-raiser for 30 years. This year the locations are Pick’n Save at 15179 West Greenfield Avenue; Metro Market at 17800 West Bluemound Road; and Sendik’s Market at Capital Drive and Brookfield Road.

The Golden K Club members and their sponsored youth groups of Brookfield Key Club and Tonawanda Scout Pack 156 will be ringing up their good deeds on Thursday, Friday and Saturday, December 3, 4, and 5 from 10 a.m. to 7 p.m. Seniors and youth working together in community service bridges the generation gap, provides funding for urgently needed services to the community and, at the same time, is a joyful experience.

Don Ralfs and **Lee Schultz** are coordinators of the Golden K Bell Ringers. About 150 volunteers work in pairs for one-hour periods at the Red Kettles. Each year during this period about \$5,000 is contributed by great and supportive shoppers.

Hunger Hurts. It denies dignity, lessens human energy and impairs the potential of people, especially children, to succeed.

The Kiwanis Golden K Club has been

raising funds for the Waukesha County Food Pantry for the past 10 years. During the past year 2,224 boxes of cereal have been contributed as well as \$667 in cash.

Cereal is one of the highest priority needs at the Food Pantry. For the past 5 years the Golden K Club members have donated more than 1,000 boxes of cereal each year. It is being supported by members bringing a box of cereal to the meeting on the first Friday of every month. Coordinators for the Food Pantry activities are **John Nason** and **Larry DeLonge**. They keep lines of communication open, promote the cereal project and take donated cereal to the Food Pantry.

During the Holidays, even more is needed and all contributions go to lessen the hurt of hunger a little bit, especially to children.

The Elm Grove Golden K Kiwanis Club has more than 75 senior members committed to improving the world one child and one community at a time. The Salvation Army Red Kettles program and the Waukesha County Food Pantry project fulfill this mission. The Club meets Friday at 9 a.m. at St. Mary’s Catholic Church Senior Center in Elm Grove.

Kiwanis Club – Update

By Mike Ullrich

2016 was a wonderful year for the Elm Grove Golden K – Kiwanis. Our 73 active members, averaging 79 years of age, were able to give back to the community to the dollar amount of \$13,667. Our largest fundraisers were our Spaghetti Dinner in February which netted us \$5,000 and our Pancake Breakfast netted us \$3,000 in May. Somehow we gave away more money than we took in. When you help others, miracles happen.

In 2016, the Kiwanis Golden K Club of Elm Grove awarded four \$1,000 financial scholarships to Brookfield Central Key Club Seniors who were going off to college. The Club also gave \$4,000 to the Waukesha Literacy Council and \$1,000

to The Salvation Army, which sponsors their own educational systems for the disabled. We also continued to purchase and give away i-Pads for the education of educationally disabled children in the Elmbrook system. The remainder of the money was given to organizations that help children in our area.

Thanks to all the people who support and contribute to our wonderful group of men and women.

NOTE: For information about Kiwanis meetings / membership, contact **Mike Ullrich** at (262) 786-1677 or e-mail: michaelullrich@yahoo.com.

Clubs & Organizations



Conceptual drawings courtesy of Wangard Partners

(Top, left) Townhomes
(Top, right) Retail & Residential space
(Bottom) Layout of buildings/roadways



The Reinders Property Redevelopment Project

Its Current Status...

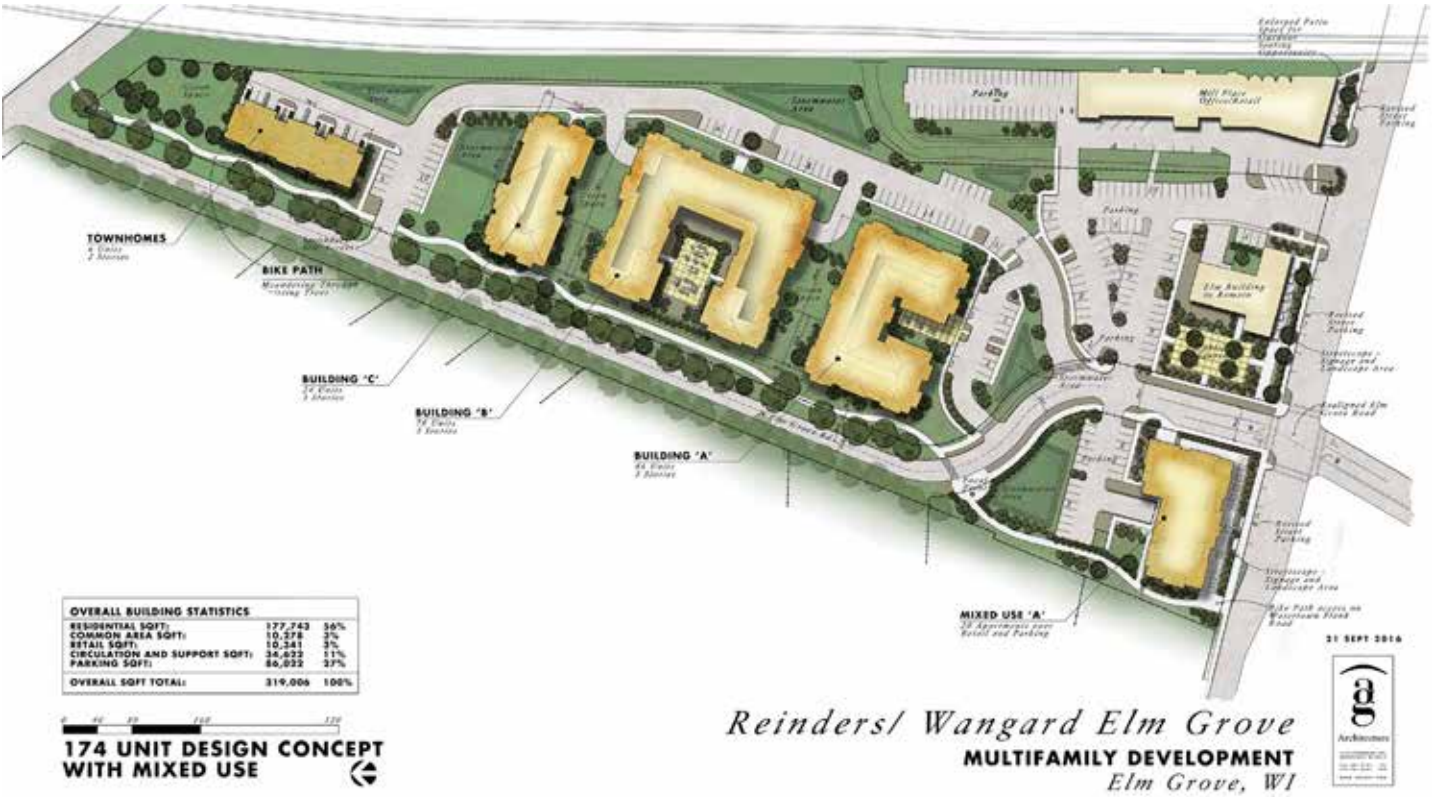
By Lisabeth Passalis-Bain
elmgrovenews@yahoo.com

Following several months of Village of Elm Grove Ad Hoc Committee meetings to consider the pros and cons of a possible re-development of the Reinders property in downtown Elm Grove; two Open House events at the Elm Grove Woman’s Club, hosted by Wangard Partners (investment, real estate brokers and developers) to disseminate information and listen to public comments/concerns (verbally and via written surveys) — as of late November — NO DEFINITE PROPOSAL has been submitted to the Village by Wangard Partners.

An Ad Hoc Committee meeting was scheduled for the evening of November 29 (after this issue went to press) solely for the purpose of hearing public opinion on the issue.

The Ad Hoc Committee will convene again on Wednesday, December 7 at 6 p.m. at Village Hall for the purpose of summarizing the board members’ opinions. Members of the public may attend the meeting, but public comment will not be allowed at that time.

Citing increasing interest rates and building costs, Wangard Partners appears to want to move forward with the project and present an official proposal to the Village, possibly as soon as December or January. Agendas for upcoming Village meetings are available at www.elmgroveti.org. Look for another project status report in our January issue.



Reinders Property Redevelopment Fact Sheet

Courtesy of Wangard Partners

Site Plan Updates:

- * Existing Plank Road Plaza Building 12,274 SF; New mixed-use building 10,341 SF
- * Mixed-use building shifted east from setback
- * Bike path extended directly to WTP Road

Site Overview:

- * Parcel Size
 - 1.30 Plank Road Plaza
 - 6.37 Main Parcel
 - 1.29 Road Vacation
 - (0.65) Road Dedication
 - 1.36 Mill Shops
 - 9.66 Acres Total
- * Building Site Coverage – 22%
- * Green Space Ratio – 40%
- * Impervious Surface – 56.5% (71.3% Existing)
- * Density – 174/9.66 = 18 units/acre
- * Effective residential density = 20.9 units/acre

Parking Overview:

- * Total parking – 502 spaces
- Residential – 340 spaces; 1.95 spaces/unit
- Commercial – 162 spaces; 1 space/250sf

Buildings Overview:

- * Total Units – 174
- Building A – 46 Units
- Building B – 78 Units
- Building C – 24 Units
- Townhomes – 6 Units
- Mixed-use – 20 Units
- Mixed-use commercial – 10,341sf

Building Height

- * Townhomes, 2-stories
- * Buildings A, B, and C, 3-stories
- * Mixed-use, 1-story commercial, 2-story apts.
- * Partially recessed Basement Parking

Units: Mix:

- * (75) 1-Bedroom
- * (17) 1-Bedroom + Den
- * (76) 2-Bedroom / 2-Bath
- * (4) 2-Bedroom Townhome
- * (2) 3-Bedroom Townhome

Rents:

- * Apartments \$1,300 – \$2,300/month
- * Townhomes \$3,100 – \$3,500/month
- * Average Apartment size: 1,054 SF
- * Townhome size: 2,075 – 2,300 SF

Improved Traffic Conditions:

- * Reduced number of access points on WTP
- * Eliminated perpendicular parking and backing onto Watertown Plank Road (WTP)
- * Realigned Elm Grove Road (EGR)
- * Controlled intersection at EGR and WTP
- * Public Benefit:
 - Improved Traffic Flow
 - Public Plazas
 - Green Space
 - Bike path, 8’ wide from Juneau Blvd. to WTP
- * New \$47 million mixed-use development
- * Train noise reduced to neighboring residents up to 8dB (3.7dB average)

Happy Holidays!

On everyone’s list,
there’s someone you’re going to have to shop for.
We’d like to invite you to get your gift ideas at
Elliott’s Ace Hardware...your neighbor for 59 years.

Elliott’s ACE Hardware

Since 1957...A Hardware Store And Much More

Thank You!
We appreciate your business.
Have a safe and happy holiday season.
Stew Elliott, Jr. • Stewart Elliott, Sr. • Matt C. Elliott

4 Great Neighborhood Locations To Serve You Better!

ELM GROVE
15360 Watertown Plank Rd.
(262) 782-9000

WEST ALLIS
11003 W. Oklahoma Ave.
(414) 545-7759

MUSKEGO
S64 W15732 Commerce Center Pkwy.
(414) 422-9344

PEWAUKEE
1268 Capitol Dr.
(262) 695-8990

News Briefs



Two scenes from Trinity Academy’s production of The Wizard of Oz.

Wizard of Oz Visits Elm Grove, (Dorothy & Her Little Dog Toto, Too)!

By Lisabeth Passalis-Bain, elmgrovenews@yahoo.com

The Elm Grove Woman’s Club, 13885 Watertown Plank Road, was the delightfully transformed site of a November 18 and 19 stage production of “The Wizard of Oz”, performed by an enthusiastic ensemble of elementary through high school-age students from Trinity Academy in Pewaukee.

In this simplified version based on the beloved 1939 film, the audience witnesses the story of young Dorothy Gale’s simple life in rural Kansas; her bumpy ride via tornado with dog Toto to Munchkin Land; the news soon after arrival that a wicked witch is dead (killed when Dorothy’s house fell upon her); enchanting meetings with a scarecrow, tin man and cowardly lion; a not-so-enchanting meeting with witch #2

(said to be “worse than the other one”); encouragement from a Good and beautiful witch named Glinda, who explains that “only bad witches are ugly”; and one wild and adventurous trip down the famed yellow brick road to the merry old Land of Oz; then three clicks of her ruby slippers, a reunion with her Aunt Em and Uncle Henry, and an ultimate realization that there is “no place like home!”

Directed and produced by **Mona Zignego**, the lead actors included: **Bernadette Zignego** (Dorothy); **A. J. Peterson** (Hunk/Scarecrow); **Charles Hart** (Hickory/Tin Man); **Ashlyn George** (Zeke/Lion); **Therese Scanlan** (Aunt Em / Glinda); **Christian Wolf** (Uncle Henry / Guard); **Isabella**

Zignego (Miss Gulch / Witch); **Martin Scanlan** (Marvel/Oz); **Xavier Zignego** (Toto); **Alexis George** (Head of the Everythings/Master of Ceremonies).

Elm Grove resident and the *News-Independent’s* “Past Times” columnist **Dr. Stephen K. Hauser**, who has taught introductory /college-level history classes at Trinity Academy for more than 15 years, and his wife **Janice Hauser**, a past president of the Elm Grove Woman’s Club, were instrumental in helping to acquire the use of the EGWC Clubhouse for the school’s annual musical production, and were seen greeting many of the parents and students in attendance.

“Kids from Wisconsin” Announces Auditions

The Kids from Wisconsin is currently accepting applications to audition for its 2017 season.

The show troupe has been entertaining audiences all over Wisconsin, the Midwest and the nation since the KIDS inaugural summer of 1969. Following 17 days of training and learning the two-hour, Broadway style production, this talented group of 20 vocalists/dancers and 13 instrumentalists will take to some great stages to perform up to 60 shows next summer along with being featured at the Wisconsin State Fair.

Kids from Wisconsin is a non-profit performing arts program for talented youth ages 15–20. This program is made possible with funds from sponsors, individual donations and foundations, including a grant from the Wisconsin Arts Board with funds from the National Endowment for the Arts.

A summer with the KIDS is one of the most exciting and rewarding experiences an aspiring young performer can have. Many KIDS alumni have gone on to successful careers in performance, music education and many other fields of endeavor.

Area auditions will take place on February 26 in Milwaukee (10 a.m.–5 p.m.) at the Marcus Center for the Performing Arts. Walk-ins are available only if slots exist.

Applications must be submitted by January 9, 2017. Application forms and additional information on auditions and audition requirements can be found at: <http://www.kidsfromwisconsin.org/>

Children’s Hospital of Wisconsin Benefits from Gaming Marathon

By Lisabeth Passalis-Bain / EGNU

For 36 hours straight (from Saturday, November 12 at 9 a.m. through Sunday, November 13 at 9 p.m.) a local Button Mash Bash / Extra Life group of video gaming enthusiasts kept up a sleep-deprived, yet hectic pace, all for the purpose of raising needed funds for Children’s Hospital of Wisconsin, specifically to help provide care for children and families who struggle with extensive medical expenses.

This year by late November the Button Mash Bash team’s 3rd annual event had raised more than \$14,500 in donations, already exceeding their \$12,000 goal. That figure ranked them in the top 40+ of more than 5,400 teams in the United States who participated in 2016 — and brings their previous + current fundraising efforts to a total of more than \$40,000.

Team co-founder **Christos Passalis-Bain**, a graduate of Brookfield East High School and the University of Wisconsin – Milwaukee, notes that “the event can be found at www.buttonmashbash.org, where you can still donate through December 31.” (Click on Christos’ profile page.)

Christos also joins his teammates in thanking the many area contributors and sponsors who helped make the event a great success, including **Crumby Art Bakehouse & Cakery** of Elm Grove (owners **Natalia & Andrea**).

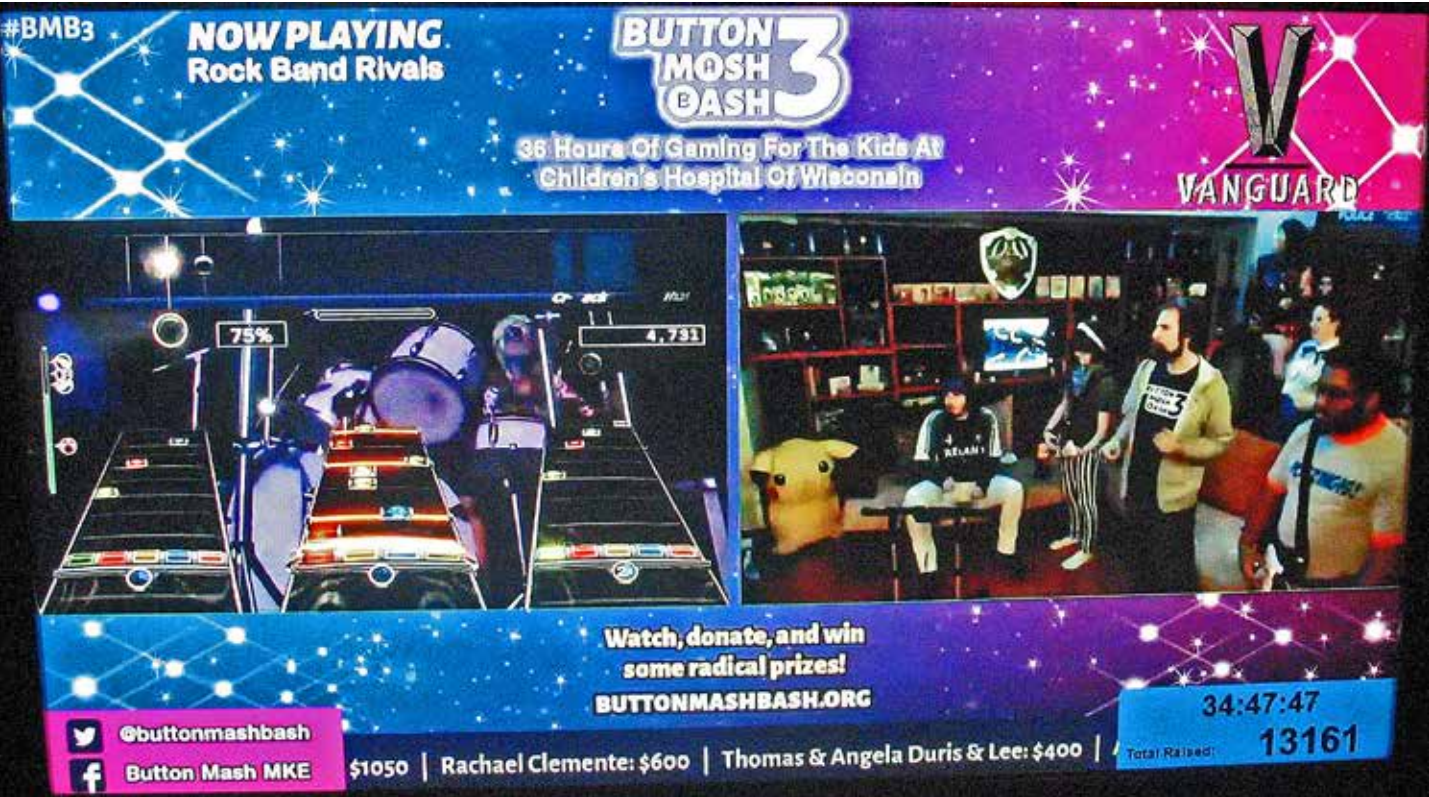


Photo by Lisabeth Passalis-Bain / EGNU

Christos Passalis-Bain (standing, third from left) performs the Rock Band Rivals vocals for “Whip It!” by Devo, during the 3rd Annual “Button Mash Bash” fundraiser for Children’s Hospital of Wisconsin.

Read All About It!

Experience a Victorian Christmas at the Elm Grove Public Library

By Noah Weckwerth

Holiday traditions sure have changed over the years. For many, the season seems to begin earlier every year, and with all the shopping, planning, and traveling involved, the stress piles up in a hurry. That is why it’s important to pause occasionally during the hectic season and appreciate some of the wonderful holiday events your community has to offer.

On Tuesday, December 6, at 7 p.m., the Elm Grove Public Library warmly welcomes you on a trip into Christmas past with “Margaret Cummins: Christmas at Balmoral,” a one-night-only performance by historical impressionist **Jessica Michna**.

Victorian-era Scotland is the scene for this festive show, in which we are cordially invited to join the festivities at Balmoral Castle, the holiday home of the royal family. Our guide for the evening is Margaret Cummins, head housekeeper of Balmoral during the reign of Queen Victoria, as she prepares for the arrival of the royal couple and their nine children. We’ll become members of the royal household as Mrs. Cummins instructs her staff in the traditions and history of the season.

“Christmas at Balmoral” is your chance to relax and enjoy a step back into the past for an evening. This **FREE** program



Photo courtesy: Elm Grove Public Library

Jessica Michna, shown here as Margaret Cummins, has been portraying famous women (real and fictitious) since 2005.

will be taking place in the O’Neill Room, located below the library. There is no registration required. Simply show up and enjoy the performance and holiday treats provided by the Friends of the Elm Grove Library (FOEGL).

Contact the library at (262) 782-6717 for more information.

“Lights of Love” Event to Benefit Library

By Janet Wintersberger

On Sunday, December 4, the Friends of Elm Grove Library (FOEGL) will sponsor its 22nd annual Lights of Love celebration. The event starts in the Village Library at 3:30 p.m. with family-friendly visits by Mr. Conductor & his Thomas the Train display and Santa Claus. Miss Marla will lead children’s activities in the lower level of the Library, and Mrs. Claus will read her favorite Christmas stories.

Caroling and the tree lighting ceremony will begin outdoors at 4:45 p.m. One lucky child will “flip the switch” to light the tree. He or she had entered the “flip the switch contest” when they checked out materials from the Library in November.

After the tree lighting ceremony, everyone is invited to the warmth of the Village Hall Courtroom for refreshments.

The celebration culminates the Friends’ community-wide fundraising drive. This year’s goal is \$17,000. The Friends of Elm



Grove Library is a 501(c)3.

Donation forms are available at the library, 13600 Juneau Blvd., Elm Grove. Donations may also be made online through the Friends’ website: www.FriendsofElmGroveLibrary.org.

Where will your donation go?

- * To fund both the popular Children’s and Adult’s summer reading programs, including numerous entertaining and educational events.
- * To provide an extensive enhancement to the children’s non-fiction materials, including print, educational, and DVD-BluRays.
- * To provide additional display space throughout the library for showcasing thematic collections, promoting upcoming events, and displaying unique library materials.
- * To purchase a specialized work table for behind the circulation counter.
- * To ensure that the fish in our new aquarium have a healthy and safe living environment.

Good Sports



Photo courtesy of Brookfield Academy

Congratulations to Brookfield Academy’s field hockey team, winners of the State Championship. The Blue Knights claimed the State title for the first time in 17 years. Elm Grove residents **Kate Doherty** (kneeling front row, second from the left), **Lili Wareham** (sitting front row, far right), **Cecelia Youso** (second row, second from the left), and **Liese Wareham** (second row, far right) are members of the team.

December Library Activities for Children

- * Toddler Play Group.....Tuesdays, December 6, 13 & 20, 10 to 11 a.m.
- * Lego Club (grades K-5)Thursday, December 15, 3:30 to 4:30 p.m.

Consumer Reports Available Online

Need to find the perfect gift? Get an assist from *Consumer Reports* Online! They have expert, unbiased ratings and reviews, making your research easy as pie. It’s FREE with your library card. Visit www.bridgeslibrarysystem.org/consumer to get started.

Stenz-Griesell-Smith

AMERICAN LEGION POST #449
3245 North 124th Street, Brookfield (262) 781-0488

Retire your worn and tattered flags with dignity. Bring to Post 449

EVERYONE is welcome to attend our upcoming events:
No drink or food carry in’s allowed.

- * **NEW:** Free phone & charging station in bar area.
- * **We’re collecting items for Homeless Vets.**
- * **Monday only:** Post opens at 1 p.m.,
- * **Lunch:** 11:30 a.m. to 2:30 p.m., Tuesday–Thursday
Friday, 11:30 a.m. to 3:30 p.m.
- * **Mondays:**.....Taco Night Buffet, 5 to 8 p.m., Chef Mick
- * **2nd Monday:**.. One More Time Band (Big Band Music & Dancing), 1:30 to 3 p.m., \$3
- * **Wednesdays** .Chair Volleyball, 5 to 6 p.m. FREE. Call Sam Catura (414) 418-0289.
- * **Wednesdays** .Dart-ball League, 7 p.m.
- * **Thursdays:** ...Cook-In, 5 to 8:30 p.m., Chef Tom
- * **Fridays:****FISH FRY, 4:30 to 8:30 p.m. CARRY-OUTS AVAILABLE**
Joyce Bevan, piano - 4:30 to 6:30 p.m
Various live bands, 6:30 to 10 p.m. (no cover charge)
- * **Saturdays:**Food & Raffles, 11:30 a.m. to 3 p.m.,
Various live bands, 7:30 to 11 p.m. \$5 cover / \$4 members
- * **Sundays:**Open 11:30 a.m. to closing, multi-sport TV coverage w/ Legion family

HALL RENTAL
Available for All Occasions
Call Pete Schiller
(262) 781-0488, Ext. 2

Attention Business Owners!

Make a profitable “*New Year’s Resolution*”
to **ADVERTISE** your Products & Services
to Readers in Elm Grove & surrounding communities!
To request a RATE SHEET,
E-mail: elmgrovenews@yahoo.com
Call (262) 782-6193

Support Our Veterans!

Home Improvement

Home Repair and Maintenance Services

By Scot Stark of Integrity Services

Last month I addressed some issues related to home insulation. Many of the tasks mentioned were easily performed by the homeowner. The improvements covered were related to door and window drafts, basically sealing out cold air infiltration to the home. There are more issues regarding insulation that need to be addressed. These are generally related to wall and attic insulation and also door and window products.

First, let's discuss a topic I touched on last month, replacement windows. These products have been around for quite a while, but are constantly being improved and choices expanded.

Today, one can get replacement windows for almost any application, including casement style, double hung, cottage style, etc. The advantage for these products is the relative ease of installation and, in many cases, price value. They eliminate the need for complete tear out to install a builder's window, come in Low E glass and many have convenience features for cleaning. They also eliminate the need for storm windows and have integrated screen systems. In a number of cases they were a less expensive alternative to repairing or rebuilding the old windows and provided a brand new window rather than an old repaired window.

Entry exterior doors offer a myriad of choices and provide a vast improvement in energy efficiency over that old wood door. Fiberglass products are available

in hundreds of styles with choice of color, design, texture and window configurations. Fiberglass offers superior energy efficiency over metal and wood and are maintenance free. Installation requires some knowledge and experience but is not overly complicated. These products are a smart way to upgrade and improve your property.

Also, let's not forget garage doors. I have repaired many old wooden garage doors that were showing signs of decay and structural problems. In a number of cases I encouraged the homeowner to replace the doors with insulated steel products. It is always astounding to see the difference this makes in upgrading the appearance and curb appeal of the home. Again, there are hundreds of styles, profile, color and window choices.

Adding insulation in walls and attics will improve comfort and cut down on energy loss through walls and roof. Many older homes lack adequate insulation. Adding insulation in attic areas can be accomplished with blown in products or blanket fiberglass products. There is an additional choice of sprayed on insulating foam products applied to roof sheathing as well as basement sill areas. Adding insulation to walls requires special techniques provided by contractors. Most important is to research contractors who specialize in energy applications.

Next Month: Interior painting and refinishing!

INTEGRITY SERVICES

"I can fix that!"

Scot Stark – Elm Grove resident
(414) 333-7285

Painting & Refinishing / General Repairs / Installations / Property Maintenance
Insured / Free Estimates / 40 years Experience

Legal Issues

Make Estate Planning A New Year's Resolution

By Attorney Isabell M. Mueller

New Year's resolutions represent a desire to change things for the better. One of the best possible resolutions you could make for yourself and your family is to implement an estate plan. A basic estate plan should include a financial durable power of attorney, a durable power of attorney for health care, and either a will or a revocable trust. These documents will address the most immediate concerns: who will handle your finances and make medical decisions for you if you become incapacitated, how will your assets be distributed in the event of your death, and, most importantly, who will raise your children if you cannot.

If you already have an existing estate plan, now is a good time to review what you have. Time and events have a way of changing your life and your estate plan should always reflect your current situation. Consider reviewing the plan with an attorney to determine if any revisions are necessary. At a minimum, you should read over the documents yourself and ask the following questions:

- 1. Have there been important changes in your life, such as the birth or death of a loved one?
- 2. Has there been a significant change in the size of your estate?

- 3. Are the people you named as your financial power of attorney and health care power of attorney still who you would choose today? What about the alternate agents?
- 4. Are you satisfied with the people you have named as executor or trustee?
- 5. Would you name the same people to act as guardians for your children? Are your alternate choices for this role also still the best ones?
- 6. If you have incorporated a trust to hold money for your children, would you still put in place the same provisions regarding the amounts, timing and purpose for the distributions?
- 7. Do you want to add any charitable gifts, or gifts to other individuals, to your estate plan?
- 8. Are the beneficiary designations on your life insurance, 401k's, IRA's, annuities, etc. consistent with your existing estate plan?

Remember, your life is a work in progress and a good estate plan should be one as well.

Isabell M. Mueller

Attorney at Law

Estate Planning, Probate, Elder Law, Wills,
Trusts & Powers of Attorney

IMueller@MuellerLawOffices.com
414-430-1722 (Phone)
262-780-4808 (Fax)

890 Elm Grove Road, Suite 202, Elm Grove, WI 53122

Our Village



Photo by James L. W. Bain / EGNI

Flamingoes wear cloaks of snow in the front yard of an Elm Grove residence one past winter.

Classifieds

Listings are \$15.00 per issue (for up to 20 words) + 25 cents for each additional word. Call **(262) 782-6193** or E-mail: elmgrovenews@yahoo.com

Kiwanis Golden K of Elm Grove, Wisconsin

COME JOIN US, men and women to serve the children of our community. We meet each Friday morning at 9:30 a.m. in the St. Mary's Senior Center in Elm Grove. We have wonderful speakers each week and we have lots of fun. For membership details, talk to one of the 80 Kiwanis members, e-mail Mike Ullrich: michaelullrich@yahoo.com, or call (262) 786-1677.

Tom's Painting

No Job Too Small!
Interior, Exterior, Caulking, Staining
Small Drywall Repairs
Senior Discounts. Great Referrals.
30 years experience. Call (414) 719-0138.

Attention Employers:

Post your job openings here!

*Happy Birthday
Jody!
December 10*

**Happy Birthday
Christos!
December 17**

Flamingoes in snow And Polar Bears on beaches See Life with new eyes

Haiku by Lisabeth Passalis-Bain

News Briefs



Photo by Jeffrey Chang

Brookfield Academy students (from left) **Adam Abuhajir, Sriram Gollapudy, Margot Armbruster, and Jason Tan.**

Brookfield Academy Latinists Excel at Yale

By Bridget O'Donnell

Six four-person teams of Brookfield Academy scholars from grades 8 – 12 competed successfully at the recent Invitational Certamen hosted by Yale University. Certamen is a quiz bowl game testing knowledge of Latin and Roman culture. The three Middle School teams placed 10th, 9th, and 5th in a 34-team novice field. The intermediate

freshman team placed 7th in its division. Two advanced teams competed, each reaching the semifinals. The advanced A team (featured in the photo) of **Adam Abuhajir, Sriram Gollapudy, Margot Armbruster, and Jason Tan** took first place in their division against some of the top Latin schools in the nation! Armbruster is a resident of Elm Grove.



Photo by April McCarty

Brookfield Academy eighth graders and Latin scholars (from left) **Megan McCarty, Linda Karti, Charlotte Aexel, and Ashley Zhu** attended the Invitational Certamen hosted by Yale University. McCarty and Karti are Elm Grove residents.

Four Perfect ACT Scores at Brookfield Academy

By Bridget O'Donnell

Brookfield Academy is proud to announce that seniors **Sriram Gollapudy, Shalini Gundamraj, Rhea Nangia, and Alexander Zhu** have earned the highest possible composite score of 36 on their ACT college admission and placement

exam. This is the highest number of perfect scores in one senior class at Brookfield Academy. This year's senior class totals 83 students. All four students began their academic journey in Brookfield Academy's Primary School and Lower School.



Photo courtesy of St. Mary's Visitation

St. Mary's Students Visit Seminary, Cathedral

By Gary Newman

St. Mary's Visitation 5th-8th graders recently went on a church art and architecture field trip to the St. Francis Seminary and the Cathedral of St. John the Evangelist in Milwaukee. The students toured both the Seminary and Cathedral, observed and experienced the various forms of religious art and architecture contained there, and learned how such things as stained glass windows, sculptures, religious art and architecture enhance the overall worship experience.

ATTENTION SENIORS!

Need a ride... to a club or activity, medical appointment, or just to go shopping or out to lunch or dinner?

Consider...

ELMBROOK SENIOR TAXI

The Taxi serves residents of Elm Grove, the Town & City of Brookfield, & Butler.

Call... (262) 785-1200 for details.

AD courtesy of
The Elm Grove News-Independent





The Best Christmas Pageant Ever

Dec. 1 to 23, 2016



December 5 – 6, 2016



SUNSET
PLAYHOUSE
SunsetPlayhouse.com
800 Elm Grove Road
262-782-4430



December 14 - 18, 2016

ELMBROOK HUMANE SOCIETY

HOLIDAY ADOPTION EVENT



All adoption fees waived!

EVERY ANIMAL DESERVES A

Home FOR THE Holidays

MON, TUES, THURS, FRI
1pm - 6pm

SAT - SUN
12pm - 5pm

NOVEMBER 25, 2016 - DECEMBER 23, 2016



This was made possible by Skylark Automatic Vending, Inc. and the Stanley and Mike Kass Family



Don't be crying when the snow starts flying...

Call us today and let us make your day!

Free Estimate

Fall Lawn Care

Winter Snow Plowing and Salting

Fall Clean-Up

- Vacuum leaves
- Clean flower beds
- Clip back perennials
- Fertilization for trees and lawn

Snow Plowing

- Commercial
- Residential
- Salt or calcium chloride
- On time; On call 24/7



JW'S Lawn & Snowplow Service

414-406-1756

Elm Grove's Best Kept Secret for 30 Years!

Also serving the surrounding communities. Specializing in condominiums and commercial properties.

All Village residences, businesses & P.O. Boxes in 5-3-1-2-2 receive

The ELM GROVE NEWS-INDEPENDENT

via the mail on or before the first day of every month!

Additional **FREE** copies are available (while supplies last) at these & other fine area locations:

ELM GROVE

- * Elm Grove PUBLIC LIBRARY
- * Elm Grove VILLAGE HALL
- * IMPERIAL HAIR CARE
- * FAZIO'S ARTISAN CHOCOLATE
- * ELLIOTT'S ACE HARDWARE
- * SCHOOL SISTERS OF NOTRE DAME
- * CAROLINE'S CAFÉ
- * NEW LOOK TAILORING
- * HERITAGE OF ELM GROVE
- * GET IT TOGETHER CLOTHING
- * KIWANIS CLUB – GOLDEN K
- * CRUMBY ART BAKEHOUSE & CAKERY
- * SENDIK'S
- * BAKERS SQUARE
- * CULVER'S
- * ST. MARY'S THRIFT SHOP
- * SWEET TOOTH
- * SILVER SPUR
- * GREAT HARVEST
- * O'DONOGHUE'S IRISH PUB
- * SUNSET PLAYHOUSE
- * THE CHOCOLATE FACTORY
- * JILLY'S CAR WASH
- * M3 REALTY

BROOKFIELD

- * Brookfield PUBLIC LIBRARY & CITY HALL
- * AMERICAN LEGION POST #449 (3245 North 124th St.)

WAUWATOSA

- * YMCA (124th St, near North Ave.)

For information & to request an AD Rate Sheet, E-mail: elmgrovenews@yahoo.com or Call: (262) 782-6193



Call to Schedule a Tour!

WE CAN HELP YOU WITH THE *next step.*

Apartments Available

Heritage offers personalized care and service to meet the needs of each individual resident. Well-trained and compassionate staff is available 24 hours per day in addition to a reassuring emergency call system.



Private Studio, One and Two Bedroom apartments are now available.

HERITAGE ELM GROVE

Assisted Living and Memory Care Communities

Heritage Elm Grove

800 Wall Street

Elm Grove, WI 53122

262-786-5800

www.heritagesenior.com