



Elm Grove NEWS- INDEPENDENT



Vol. 15 No. 12

Serving Elm Grove, Wisconsin & Neighboring Communities

August 2025

Freedom of the Press is Essential. Community News Matters.

Monarch Pledge Update

By Tyler Beckley

As the monarch butterfly population continues to decline across North America, the Village of Elm Grove is making a concerted effort to try to reverse the trend, even if it means planting one milkweed plant at a time. In 2025, Elm Grove became one of only 13 communities in Wisconsin that took the National Wildlife Federation's Mayor's Monarch Pledge, a commitment to implementing habitat restoration and public education strategies that support the iconic species. So far, the village has made considerable progress: 322 monarch-friendly habitats, marked by "dots" on a national conservation map, have been established. The village's stated goal is 400.

According to the U.S. Forest Service, the monarch butterfly is known to migrate 3,000 miles from Canada to Mexico for the winter. The reason its population has dramatically declined in recent decades is due to habitat loss, pesticide use, and the big hitter, climate change. Monarch caterpillars can only rely on milkweed as their food source, a native plant that has been getting eradicated from urban and suburban areas.

Elm Grove's campaign to plant milkweed and educate its residents on pollinator-friendly practices through the Monarch Pledge's 29-point action plan. Communities can choose from a range of conservation efforts, from installing demonstration gardens and hosting monarch festivals to revising mowing schedules and integrating monarch education into school curricula.

(See MONARCH PLEDGE – Page 2)



Photo by James L. W. Bain / The News-Independent

Monarch butterflies spread their wings atop a coneflower in an Elm Grove garden.

Underwood River Parkway pathway is under construction – Gremoor & Juneau to follow!

(See News Briefs – Page 5)

INSIDE

PAGE 2: I Know Where You Live!

PAGE 3: Village Update
Business & Club Directory
Classifieds

PAGE 4: Our History
Volunteers Needed!

PAGE 5: Calendar of Events

PAGE 6: Report from The Capitol
News' Hounds

PAGE 8: Elm Grove Library Programs
Young Writers

PAGE 9: Young Writers & Reporters
Old(er) Writers
Coloring for Kids of ALL ages!

PAGE 10: Public Safety Reports
Community Wish Lists
Letters to the Editor
Word Search
Mr. Hugh's History

PAGE 11: Local Sports
Green is Good!

PAGE 12: Friends of The News list
Friends of The News form

(+ All the NEWS there's room to print.)

Coming Next Month...

Our
15th Anniversary
edition

where the focus is always
C-O-M-M-U-N-I-T-Y!

ADVERTISE

your business, event, club,
organization, school, church,
political campaign & more.

To request a Rate Sheet /
place an AD

Email: elmgrovenews@yahoo.com
Or call (262) 782-6193



ROBYN VINING IS RUNNING FOR STATE SENATE!

ROBYN VINING
STATE SENATE

Join us for our annual

*Popsicles
in the Park!*

Elm Grove Beer Garden
Sunday, August 3rd 3-5pm

Crafts for kids!
Popsicles for everyone!

Paid for by Friends of Robyn Vining

*****ECRWSS*****
Postal Customer
Elm Grove, WI 53122

PRSRT STD
US POSTAGE PAID
Elm Grove, WI
Permit No. 30

Elm Grove
News-Independent LLC

Founder / Owner / Publisher / Editor
Lisabeth Passalis-Bain

News & Advertising
elmgrovenews@yahoo.com
(262) 782-6193

www.elmgrove.news
Click on ARCHIVE to read past issues.

Photographer / Photo Editor
James L. W. Bain
Production & Distribution Assistant
Christos Passalis-Bain
Web Designer / Webmaster
Nicholas Passalis-Bain
Production Artist
Chaz

Published monthly.
Distributed via the U.S. Postal Service
to every Residence, Business & P.O. Box
in Elm Grove, Wisconsin 53122.
Additional copies available at select
locations within Elm Grove &
neighboring communities.
Online @ www.elmgrove.news

Mailing address:
Elm Grove News-Independent
14420 Watertown Plank Rd.
Elm Grove, WI 53122-2423

Copyright 2025 by
Elm Grove News-Independent LLC
All rights reserved.
Any reproduction without written permission
from the Publisher is prohibited.

"I Know Where You Live!"



Lisabeth
Passalis-Bain



The News-Independent is mailed
by the first of each month to every
residence & business in Elm Grove.

Copies are also available for pick up
at numerous locations, including:

- Elm Grove Public Library
- Brookfield Public Library
- Elm Grove Post Office
- Sendik's / Ace hardware
- The Chocolate Factory
- Sunset Playhouse / Fazio's

Do you have a **QUESTION** about community issues,
people, places, local organizations, area history, etc.?
ASK
Dr. Who, What, Where, When, Why & How
(aka, Publisher Lisabeth Passalis-Bain)
E-mail questions to: elmgrovenews@yahoo.com
or Mail to: EGNI, 14420 Watertown Plank Road, Elm Grove, WI 53122
The "Doctor" is in!

+

**NEWS ITEMS / PRESS RELEASES / PHOTOS
MAY BE SUBMITTED FOR CONSIDERATION**

News Briefs

Veteran's Park Project Fundraiser Gaining Ground
By Tyler Beckley

The restoration of the southern end
of Veteran's Park has reached several
milestones, propelled through a groundswell
of support from the community, including
a large anonymous donation of \$3,500.
Because of this, the Elm Grove Beautification
Committee expresses its gratitude to all those
who donated.

This project is not just about removing
invasive species like thistle and reed
canary grass. It is a long-term investment
that will help manage storm water and the
preservation of local wildlife. Along with
this, the project is based around honoring the
U.S. veterans that have served and sacrificed
for our country. Did you know that the five
crabapples planted are symbolic of the five
branches of the military?



Photo by Lisabeth Passalis-Bain / EGNI
A Blue Star marker near Veteran's Park.

Since 2021, the Beautification Committee's
Invasive Species Task Force has been working
to revitalize this area. Now, with the support
of a \$500 grant from the Elm Grove Junior
Guild to initiate the comprehensive plan, the
ecological restoration company Native Roots
LLC will allow the project to push forward.

The total cost of project completion is
\$5,600. Generous contributions from **Pat and
Mark Westen, Andrea and Jim Emling,
Clarissa and Michael Ortiz, Bette and
Rich Frangesch, Jennifer Morris, the Elm
Grove Woman's Club, Talia and Andrew
Cawrse, Bonnie and Jerry Welz, Patricia
Ruttum, Lina and Brian Badura, Lanora
Jennings, Elizabeth and James Lange,
Brookfield Congregational Church,
the Saidai Family, Carol and Michael
Cinquegrani, Jennifer Studebaker, Paul
Byrne, Jill Landree, and the Coffey Family**
will assure that this project is completed!
Supporters of this project can view the 13-

page plan and make tax-deductible donations.

After a pre-revitalization insect survey,
done by **Danielle Bell** and **Nicci Sternitzky**
in late July, major restoration work is set to
begin in August, with a dormant seeding of
native seed mixes scheduled for early winter.

Whether your donation was through cash
or a few hours out of your day, every bit of
support is appreciated and helped to play a
part in bringing this project to fruition. Now,
if you are curious how you can help, you
can attend the Beautification Committee's
monthly meetings. New members are
welcome to join at any time, especially those
who are passionate about environmental
preservation and enhancing Elm Grove's
natural beauty.

Contact: egbeautification@gmail.com for
more information.

JW'S Lawn & Snowplow Service

Ask about
our
5%
discount
options!

Elm Grove's Best Kept Secret... Celebrating 30 Years with You!

Summer Services

- Summer Clean-ups
- Mulch Installation
 - Bed Edging
- Insect/Grub Control
- Bush/Shrub Trimming
 - Core Aeration
- Fertilization for Lawns & Trees
- Fine Turf Mowing
- Virtual Hand-Free Weeding (mulch and flower beds)

For a Greener Way, Call Today!

Janet L. Wolski, Owner
414-406-1756

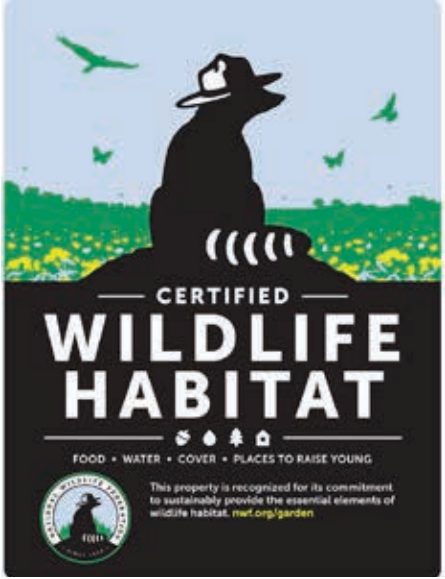
Also serving the surrounding communities.
Elm Grove resident for 28 years.

MONARCH PLEDGE
(Continued from Page 1)

In Elm Grove, much of the work is being
carried out through the Beautification
Committee, a volunteer-led group that meets
monthly to discuss and plan green initiatives.
The committee is actively seeking new
members—particularly those with an interest
in native plants, sustainability, or community
service.

The Beautification Committee meets the
first Wednesday of each month at 6:30 p.m.
in the Park View Room at the Village Hall,
and of course community members are
encouraged to attend.

If you wish to learn more about the
Monarch Pledge, what kind of progress Elm
Grove has made, or see the full list of the 29
recommended actions you can make, visit the
National Wildlife Federation's page. For those
looking to make a difference in the world, the
message should be clear: plant milkweed,
protect the monarchs, and help Elm Grove
pave the way in local conservation.



By Jim Koleski, Village President / jkoleski@elmgrovewi.org



WE Energies and Power Surges / Outages
Update. As promised, a meeting with senior WE Energies leadership was held on July 1st including **Dave Megna**, Senior Vice President of Field and System Operations. WE Energies provided the following responses to questions raised by the Village:

- Answer:** Surge arresters are installed to protect overhead and underground facilities and equipment from potentially destructive over-voltage effects of lightning discharges and certain switching transients. The Surge arresters accomplish this by diverting surge currents to ground and by limiting the magnitude of over -voltages that are impressed upon electrical equipment or structures.

- Answer:** The surge arrestors on an 8-kilovolt (kV) line are rated specifically for the equipment on that circuit. When a voltage that is 3 times the operating volage (such as 24.9kV) enters a lower volage 8kV line, excess volage an cause the surge arrestors on the circuit to fail. That excess surge of voltage follows the path of least resistance and continues to the path of ground.

- Answer:** Over-voltage events (power surges) are very infrequent/rare.

- Answer:** No. These specific projects will retire the lower (8kV) lines and transition to 24.9kV – this will limit the potential for future over-voltage incidents (power surges) in the area. He overhead to underground projects are being implemented to improve service reliability by reducing the impacts of vegetation on the power delivery system. Wind, heavy snow and ice also can have a significant impact on our system. These projects will help protect our system from severe weather incidents.

- Answer:** *First project – County Line X2451. Currently in construction. On track to be completed in September 2025. Second Project – Elm Grove X24661. Project is in bidding phase. Anticipated completion is May 2026.*

- Answer:** For reliability, we prune or cut down trees that threaten electric service. We determine a schedule each year for areas that require trimming and re-evaluate those plans as needs change throughout the year. We aim to get adequate separation between trees and power lines. How and when we trim can vary depending on the type of line and type of tree.

For High-voltage primary lines: Cleared based on the species and location of trees. Our tree trimming contractors follow guidelines set by the International Society of Arboriculture and the Tree Care Industry Association.

Service and Secondary lines: These wires are designed to be more resilient to tree contact. We trim branches that prevent service wires from hanging freely or add sleeves to service wires to prevent tree damage. Before you or your contractor trim or remove trees close to service lines (pole to home wires), call 800-242-9137 to ask us to turn off power. We turn off electricity temporarily and restore it when your work is complete – at no charge. Cable/phone lines. We do not trim trees for these facilities.

- Answer:** *We determine a schedule each year for areas that require trimming and re-evaluate those plans as needs change throughout the year. If customers are concerned about trees making contact with power lines, call us at 800-242-9137. A forester will visit the property to evaluate the situation and inform the customer whether trimming is needed to maintain safe, reliable service. We assess each situation, then schedule a crew if needed.*

The Board will be meeting with WE Energies at a future meeting and would welcome residents to interact with WE and share their concerns and ideas. **I ALSO NEED EVERYONE'S HELP. IF YOU HAVE AN EVENT OR OUTAGE – PLEASE REPORT IT TO WE ENERGIES.** At times we may think others will do it, our back-up systems come on, or the electricity will come back on soon. The Village needs these reports to document the ongoing issues we are having to drive action from WE Energies with facts and data.

As to the recent power surge events, WE Energies is standing firm that this was an act of God, or tree contact, that caused a high voltage line to contact a low voltage line. This contact caused the power surge in their analysis. During our meeting, I asked WE to reconsider their denial of resident claims for damages. The request was recently denied by Mr. Megna.



During our meeting, it became clear to me that WE made a business decision to not install new and improved high voltage arrestors on the line in question as the low voltage line will be undergrounded soon. After the incident, these improved arrestors were installed. In addition, tree trimming was performed along 124th street days after the event, calling into question the processes followed to plan tree trimming events. The Board will be reviewing next steps at a future meeting and welcome any ideas or actions we should consider, including direct communication with the Public Service Commission.

A huge thank you and keep up the outstanding work as the 2025 paving project continues throughout the summer.

We are still waiting for work permit approval from the Railroad to complete the Highland Pathway. We were told our permit request was before the CP Rail review committee for approval the week of July 14th. The area of pathway disturbed due to road repaving will be completed along with the pathway completion over the railroad track crossing.

Daylighting. Public Works Committee, Committee of the Whole and Board Closed session meetings were held in July to advance this project forward. The railroad has until July 31st to challenge the appraisal and offer for the land acquisition which is the next big milestone. The Board and public works committee are working to streamline the design of the Project to meet budget expectations.

Come Join with Us, Men & Women.
to serve the children of our community.
We meet each Friday at 9:30 a.m. in the
St. Mary's Senior Center in Elm Grove.
We have stimulating speakers each week
and offer socializing among all present.

See us on Facebook
kiwaniselmgrove@gmail.com
www.kiwaniselmgrove.org

- **Ordinance update.** The Board discussed updates to the short-term rental ordinances.

- Our Police Department is asking all bike and e-bike owners to register their equipment and get an \$8 lifetime license. This is primarily required to aid in following up if your equipment is lost or stolen.

- Shred day in September. The event, to be held on September 13th, is being moved to the St. Mary's Parking lot. Sponsored by the Elm Grove Kiwanis Club, the entrance will be off of Crescent Drive and run from 9 till noon.

- Day passes to State Parks and other facilities are available at the library. This is a great amenity coordinated by the library staff – thanks so much.

Please celebrate all the Village and Wisconsin has to offer this summer!



“Relationships Matter”

**Listings are \$25 per issue
(for up to 20 words)**

- + 50 cents for each additional word.
- + \$20 extra per photo or logo.

To place an AD...
Email: elmgrovenews@yahoo.com
or Call: (262) 782-6193

13235 W. Capitol Dr.
Brookfield, WI 53005
Location: Main floor, K Corridor
(C- eye level)
Current value is \$40,995.
I'm willing to negotiate the price.
Please call J.C. at 262-490-9055



**On August 8th,
you will be 972 months old.
*Cheers!***

Happy Birthday!
August 15th
to
JEANETTE
on Kurtis Drive



Our History: *Remembrances of Things Past*



Photo courtesy: Tom Ramstack and Arline Kirkham

AUTOMOBILE HEADQUARTERS, c. 1924. William Hornburg ran a tavern at what is now the location of Walgreens at the northeast corner of Bluemound Road and Pilgrim Parkway in Elm Grove. During the 1920s, area taverns were catering to a quickly growing automobile clientele. As a result, many taverns like Hornburg’s found a way of incorporating “automobile” or “motor-inn” into their names.

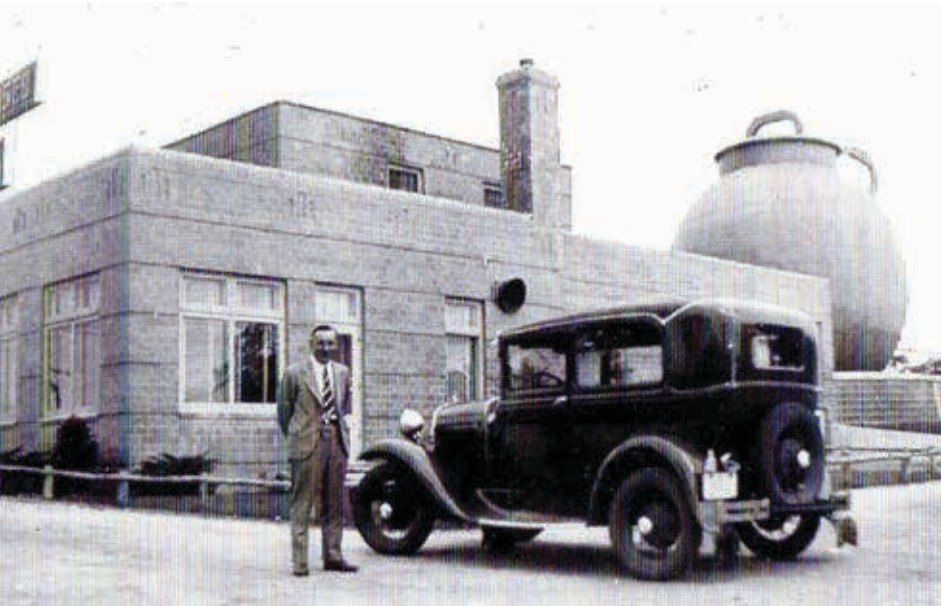


Photo courtesy: Tom Ramstack and John Schoenknecht

THE MILK JUG, 1946. Louis Kpvic poses in front of the Golden Guernsey milk jug on Bluemound Road. Inside was a large counter where patrons could order sandwiches, milk shakes, and ice cream. It became a popular hangout for teenagers during the 1940s.



Photo courtesy: Tom Ramstack and Arline Kirkham

SCHWEITZER’S FOOD MARKET, C. 1952. Edward Schweitzer ran this grocery in the village of Brookfield at a time when there were no more than three groceries in the entire town. This was a period when the town was still very rural and the majority of local farm families grew, preserved, butchered, and cooked their own foods right on the farm.

In Memoriam

*Honor the Life
of a beloved
family member or friend.*

To place an Obituary Notice in this newspaper,
e-mail: elmgrovenews@yahoo.com
or call: (262) 782-6193
for Rate information.

Volunteers Needed!

*** Community organizations in need of volunteer help are invited to submit a statement (150 words maximum) to: elmgrovenews@yahoo.com --- OR --- write to: *Elm Grove News-Independent*, 14420 Watertown Plank Road, Elm Grove, WI 53122-2423.

*School District of Elmbrook

Please see <https://www.elmbrookschoools.org/departments/human-resources/how-to-volunteer-in-elmbrook> for all of the information including completing our district’s volunteer background check process. You will need to renew this process every two years. There is an approximate two-week processing time before you are able to volunteer in our school or chaperone a field trip.

*Sunset Playhouse

Sunset Playhouse loves our volunteers! We rely on them to help create the high-quality productions that Sunset is known for. From working in the Scene Shop to Front of House ushering to helping children make crafts at our bug in a rug Children’s Theater shows, we have volunteer opportunities for anyone interested in giving time to the arts. No experience needed - we will train you. If interested, call (262) 782-4431 x233. Sunset Playhouse, 700 Wall Street, Elm Grove, WI.

Imperial Hair Care of Elm Grove

13425
Watertown Plank Road
in the
Elm Grove
Park & Shop

(262)
784-4241

Become a Volunteer Driver to Help Others in Your Community! Meals on Wheels

Delivering meals to Seniors
Monday-Friday, 11 a.m.-1 p.m.

Contact Sherry Williams
at 262-548-7829
or
siwilliams@waukeshacounty.gov



53 one 22

Elm Grove Community Foundation

www.elmgrovefoundation.org

NEW at the Community Foundation

Register Now for the 0.5K Fun Run

The Elm Grove Community Foundation is thrilled to announce the return of the beloved 0.5K Fun Run—The Race for the Rest of Us—as part of the 2025 Oktoberfest Weekend! Join us on Saturday, September 20 at 3:30 p.m. for this fun and festive "race," which is really more of a casual beer stroll from O'Donoghue's Irish Pub to the Oktoberfest grounds in Village Park.

Adults can enjoy a refreshing beer (or two) along the way, while kids sip on root beer and soak up the fun. It’s the addition to a weekend of celebration!

Registration is now open! Sign up by August 15 to get the early bird rate of \$35. After that, the price increases to \$40—so don’t wait! Secure your spot in this one-of-a-kind event today.



Oktoberfest - September 19 & 20, 2025

Calendar of Events – August 2025

Friday – AUGUST 1

- Elm Grove Kiwanis Club – Golden K Meeting: 9:30 a.m. at St. Mary’s Senior Center; Speaker: **Mark Ehlinger** Topic: “Updated Scouting Adult Training” kiwaniselmgrove@gmail.com

Sunday – AUGUST 3

- Elm Grove Beautification Committee Invasive Species Task Force Meets at 11 a.m. at Elm Grove Village Park. Volunteers welcome. beautification@elmgrovewi.org

Friday – AUGUST 8

- Elm Grove Kiwanis Club – Golden K Meeting: 9:30 a.m. at St. Mary’s Senior Center; kiwaniselmgrove@gmail.com
- Friday Flicks, sponsored by the Elm Grove Junior Guild and the Elmbrook Rotary Club; featuring “Wild Robot”. The movie begins at 8:30 p.m. at the Elm Grove Village Park pavilion. FREE.

Sunday – AUGUST 10

- Elm Grove Beautification Committee Invasive Species Task Force Meets at 11 a.m. at Elm Grove Village Park. Volunteers welcome. beautification@elmgrovewi.org

Tuesday – AUGUST 12

- Elmbrook School Board Meeting: 6 p.m. at the District Office, 3555 North Calhoun Road, Brookfield. Open to the Public. Agenda: www.elmbrookschoools.org.
- Tunes on Tuesday, sponsored by the Elm Grove Community Foundation, featuring “Kaleidoscope” – 6:30 to 8:30 p.m. at Elm Grove Village Park pavilion. FREE.

Friday – AUGUST 15

- Elm Grove Kiwanis Club – Golden K Meeting: 9:30 a.m. at St. Mary’s Senior Center; Speaker: **Craig Griffe** Topic: “Industry Advisory Program at Wauwatosa East”. kiwaniselmgrove@gmail.com

Sunday – AUGUST 17

- Elm Grove Beautification Committee Invasive Species Task Force Meets at 11 a.m. at Elm Grove Village Park. Volunteers welcome. beautification@elmgrovewi.org

Monday – AUGUST 18

- Cruisin’ The Spur Car Show. 5 p.m. – Dark (See story, this page)

Friday – AUGUST 22

- Elm Grove Kiwanis Club – Golden K Meeting: 9:30 a.m. at St. Mary’s Senior Center; Speakers: **Kay Liecht and Ron Podszus**; Topic: “Lifelong Learning in Retirement”. kiwaniselmgrove@gmail.com

Sunday – AUGUST 24

- Elm Grove Beautification Committee Invasive Species Task Force Meets at 11 a.m. at Elm Grove Village Park. Volunteers welcome. beautification@elmgrovewi.org

Tuesday – AUGUST 26

- *Elm Grove Board of Trustees Meeting – 7 p.m. at Village Hall Courtroom. Open to the Public. Agenda: www.elmgrovewi.org.

Elm Grove Recycling Center Hours

The Department of Public Works Recycling / Yard Waste Facility
900 Wall St.
(off Elm Grove Road, between Watertown Plank & Bluemound Road)

OPEN:

Tuesdays & Thursdays, 3:30 p.m. to 7:00 p.m.
Saturdays, 8:00 a.m. to 4:00 p.m.

www.elmgrovewi.org / (262) 782-6700

Friday – AUGUST 29

- Elm Grove Kiwanis Club – Golden K Meeting: 9:30 a.m. at St. Mary’s Senior Center; kiwaniselmgrove@gmail.com

Sunday – AUGUST 31

- Elm Grove Beautification Committee Invasive Species Task Force Meets at 11 a.m. at Elm Grove Village Park. Volunteers welcome. beautification@elmgrovewi.org



OWLS

OLDER / WISER / LIVELIER/ SENIORS
Serving Adults 50+ Since 2005

Thursday, September 18, 2025

Our speaker will be Allison D. Ebert, PHD – Professor / Director, Neuroscience Research Center, Director of Neurodegenerative Diseases
Her program is titled “Brain Health and Diseases” in particular, Alzheimer’s and Neurodegenerative Diseases

Doors open: 11:30a.m.; Lunch: 12-Noon
Cost: \$19.00 - members; \$24.00 - guests Program only: \$10.00

Reservations deadline: September 1st.

Community United Methodist Church
14700 Watertown Plank Rd., Elm Grove
Details: www.cumceg.org/owls
(262) 782-4060



Underwood River Parkway Ped Path is Under Construction!

NEXT SEGMENTS

- **Gremoor Drive** - Hollyhock Lane to Fairhaven Blvd (Est. start date is August 12th)
- **Juneau Blvd** - Legion Drive to Crescent Drive (Est. Start date is September 18th)



Cruisin’ the SPUR on a Roll...

(ELM GROVE) - Beautiful weather and a 100-year spread between the many classic cars on display, helped Cruisin’ the SPUR draw a big crowd behind the SILVER SPUR BBQ on Monday July 21st. And the show scheduled for 5 p.m. on Monday, August 18th will hopefully feature more of the same. It will also include many cars and cycles of European origin on display in conjunction with the annual “British Invasion”, sponsored by the Austin Healey Club of Wisconsin. So, stop by on August 18th to check out the action and enjoy the cool music, hot food and cold drinks.

MURDER AT THE HOWARD JOHNSON'S

September 4 - 21, 2025

SUNSET PLAYHOUSE

SunsetPlayhouse.com
262-782-4430

BROADWAY SHOWSTOPPERS

September 15 - 16, 2025

JOSEPH AND THE AMAZING TECHNICOLOR DREAMCOAT

July 10 - August 3, 2025



Report from The Capitol

By Robyn Vining, State Representative – Assembly District 13
*Serving Elm Grove and sections of Brookfield and Wauwatosa

STATE BUDGET

The Legislature passed the 2025-27 state budget in the early hours of July 3rd, after the June 30th deadline. A budget is a moral document—it reflects our values—and it was my job to evaluate if the budget put before me (*the day before the vote*) honored the values of my district.

What was included in the 2025-27 State Budget?

The Good: I am committed to being a legislator who gives credit where credit is due—and there are certainly positive notes:

- UW Mental Health funding
- 988 funding
- Minor safety plans
- UW-Milwaukee Health Sciences Building
- Hospital reimbursement
- Poison control funding
- Child advocacy centers
- Film tax credit
- Psychiatric Residential Treatment Facilities
- Positive Parenting Program (Triple P)

The Bad: I heard from hundreds of constituents regarding the state budget, and not one person reached out in support of the final state budget. Top concerns from constituents included the need to fund the schools, invest in childcare, and significantly increase mental healthcare access for Wisconsin’s kids. This state budget failed in those areas, among others. Here are some concerns:

- No general aid for public schools (could cause property taxes to rise)
- Special education reimbursement rate well below what is desperately needed (will likely lead to more school referendums)



- No Child Care Counts type support in the second year of the budget (could lead to closures)
- Increased childcare ratios; reduced the age to become an assistant childcare teacher (I’ve heard concerns from pediatricians about both of these items)
- No increased funding for school-based mental health services (very concerning)
- No funding for the Alzheimer’s Family and Caregiver Support Program
- Insufficient funding for the arts
- No funding for civil legal aid
- No Knowles-Nelson Stewardship reauthorization
- No funding to support veteran mental health and housing assistance

Budget Amendments:

I co-authored 24 amendments alongside my Democratic colleagues and asked my Republican colleagues one more time to adequately fund public education, childcare, expand postpartum Medicaid coverage, and more. These amendments all failed in the Republican-controlled Assembly.

Of particular concern: I authored the Postpartum Medicaid Expansion amendment, and needed only 50 votes to get it added to the state budget. **Every single Republican lawmaker in the Assembly blocked Postpartum Medicaid Expansion from being added to the budget—a stunning and deeply disappointing vote in the budget process, since over half the Republican caucus had co-sponsored the bill.**

In Summary:

A budget is a moral document—it reflects our values—and at the end of the day, my assessment was that the state budget that passed was a broken promise to Wisconsin families, and I voted No. You can find links to my state budget speech, press release, etc, at the end of this article. Please feel free to reach out with any questions or concerns.

NEW BILLS THIS MONTH!

Continuing on my mission to find common ground for the common good, I introduced three new bills to address veteran mental health, access to maternal healthcare, and accessibility in large spaces.

Veteran Mental Health/ VORP

The Veterans Outreach and Recovery Program (VORP) connects veterans to community services while providing case management and support. VORP has been successful despite severe understaffing. **My bill provides an additional seven full-time positions to allow VORP to reach more veterans in underserved communities across Wisconsin.**

Universal Changing Stations

A Brookfield mom named Sarah shared concerns about the lack of adult-sized changing stations in public spaces during my first in-district office hours in 2019, and **together we wrote the Universal Changing Stations bill.** Sarah’s family has been unable to go to places because, as an adult, her son has to be changed on the floor of public restrooms or in the back of their van (in winter!). This is both a public health issue and a human dignity issue, **so my bill requires the installation of adult-sized changing stations in certain high-capacity public buildings and creates a tax credit for small businesses to install these stations.** Let’s find common ground for the common good and make Wisconsin safe and accessible for everyBODY!

Pregnancy Protection Act

Every woman in Wisconsin deserves access to high-quality and affordable maternal healthcare. **The Pregnancy Protection Act puts into state law that maternity and newborn care are essential health benefits, and individual and small group health insurance plans must cover them.** I am a mother who lost her pregnancy coverage while pregnant, and this bill is part of my fight to make sure that every Wisconsinite who needs it has access to maternal healthcare.

I realize this was a very quick recap of the final state budget and 3 brand new bills. Please reach out with any questions—we are happy to help! It is an honor to represent you, thank you.

Forward together,

Robyn Vining
State Representative, 13th Assembly District



PHONE (608) 237 9113 / (888) 534-0013

EMAIL REP.VINING@LEGIS.WISCONSIN.GOV

f@REPROBYNVINING

@REP.ROBYN

https://legis.wisconsin.gov/assembly/13/vining

News Briefs

NOT LOOKING FOR HEROES, JUST NEIGHBORS

ELM GROVE FIRE & EMS DEPARTMENTS

If you've got the heart to serve your community and are looking for a dynamic group of individuals that make up a GREAT team, then we have an opportunity for you!

MINIMUM REQUIREMENTS

- At least 18 years old
- Have a valid Wisconsin Driver's License
- Live within the department's response area

UPON ACCEPTANCE - FIRE

- Attend one semester of Firefighter 1 State Certification course at WCTC or MATC
- Attend Probationary Training held on Tuesday evenings at the Elm Grove Firehouse.

MEMBERS ARE PAID ON CALL!

EMS - BASE REQUIREMENTS

- At least 18 years old
- Have a valid Wisconsin Driver's License
- Live within the department's response area

EMS - EDUCATION REQUIREMENTS

- Complete Emergency Medical Technician (EMT) or Paramedic courses
- Pass Wisconsin state licensencing certifications
- Attend monthly refresher training sessions at the Elm Grove Fire Department

CONTACT CHIEF NAYLOR FOR MORE INFORMATION
262-782-6700 ext. 251 EGFDchief@elmgrovewi.org

Do you have a **GOOD NEIGHBOR** who deserve recognition in print?

E-mail your story (300 words maximum)
+ a photo of your neighbor, if available, to:

elmgrovenews@yahoo.com (subject line: “Good Neighbors”)
OR

Mail it to: *Elm Grove News-Independent*,
14420 Watertown Plank Rd., Elm Grove, WI 53122

News’ Hounds & other beloved animals

Adopt a Pet at the Elmbrook Humane Society

By Morgan Pelon

Looking for the perfect summer sidekick? Say hello to Foxy, the ultimate water-loving, car-riding, adventure-having pup!

Foxy’s Faves:

- Splashing around in the lake like a furry little mermaid
- Chasing rubber balls with Olympic-level fetch skills
- Playing tug-o-war like it’s her full-time job
- Chilling outdoors, soaking up the sun or sniffing all the best smells
- Going for car rides (windows down = pure bliss!)

Foxy is dog-friendly, loves hanging with her people, and has that perfect mix of social butterfly and independent queen.

She’s crate trained and potty trained making her an easy transition into any home. Whether you’re playing in the pool or tossing sticks off the dock, Foxy’s your girl. She’s just waiting for her perfect family to grab the keys, load up the cooler, and head for the water. Dive into the best summer ever—adopt Foxy!

The EBHS is at 20950 Enterprise Avenue, (off Barker Road) Brookfield.
Call (262) 782-9261 for more information.



Photo courtesy: Elmbrook Humane Society

Foxy

News Briefs



Brookfield East High School students gather with their most influential educators.

Elmbrook Education Foundation Honors BEHS, BCHS Educators

(BROOKFIELD) – Many educators throughout elementary, middle and high school have a profound impact on their students. This year, fifteen students from Brookfield Central High School and thirteen students from Brookfield East High School were excited to choose their most influential educator in two banquets held in the nominees’ honor.

Brookfield East 2025

Students:	Most Influential Educators:
Grant Atkinson.....	Patrick Coffey
Kyra Auchampach.....	Junfang Lan
Susan Coakley.....	Michelle Bond
Emily Enright.....	Monica Lentz
Mellynda Jia.....	Justin Flynn
Aniella Kovacic.....	Douglas Johnson
Rohith Kumar.....	Mark Ritter
Shilpa Kumar.....	Molly Mathia
Yukiko Mitchell.....	Allan Lubben
Parinita Patcha.....	Alyssa Heyer
Noah Ren.....	Michelle McKenna
Cassidy Vega.....	Corey Schneidewent
Hannah Yoo.....	Marlo Dentice-Johnson

Brookfield Central 2025

Students:	Most Influential Educators:
Rawan Ahmed.....	Pam Kania
Viraj Bhagat.....	Jon Vogt
Yongju Ha.....	Ryan Osterberg
Swara Inamdar.....	Jessica Premo
Suha Muqet.....	Pete Mejac
Avaneesh Muralidharan.....	John Wilkinson
Kathrine Nadolinski.....	Lynn Koehler
Arnav Nandakumar.....	Ronn Blaha
Kartik Ramachandrula.....	Phonekeo Siharath
Sidharth Rane.....	Matt Dapelo
Vincent Rothmeier.....	Jason Lopez
Ojas Sharma.....	Sandra Aslakson
Weston VanLue.....	Daniel Tess
Josh Wang.....	Kathleen Evans
Emory Winter.....	Heidi Bver

The inspiration for this program originated with Elmbrook parent, **Jane Peavler**. The Elmbrook Education Foundation (EEF) is proud to annually sponsor the program and honor educators who have made a special impact on Elmbrook students.

“The Most Influential Educator is truly a special program. It gives students the opportunity to reflect on and express gratitude to the educators who have made a meaningful impact on their academic journey. The seniors this year demonstrated their appreciation with heartfelt speeches that showed how they were inspired, supported through challenges, and that their learning went beyond the classroom. We are grateful to the EEF for supporting a program that fosters a culture of appreciation within our school community,” said Peavler, who served as Most Influential Educator Chair.



Influential educators at Brookfield Central High School stand with the students who nominated them.

Keep it Local
with
Simply Checking

15900 W Bluemound Rd, Brookfield WI 53005
(888) 485-4400

FDIC

FDIC-Insured - Backed by the full faith and credit of the U.S. Government

Great Midwest Bank

FREE
E-WASTE
RECYCLING DRIVE

Saturday, August 16th
9 AM – 12 PM
Elm Grove Park
13600 Juneau Blvd

☒ Open to Elm Grove residents, businesses and our neighboring communities

☒ Raw Grounds Coffee and donuts while supplies last

☒ Certificates of Destruction will be available upon request


☒ Corded Electronics and Small Appliances

☒ No CRT TVs

For more information about recycling & junk removal services, Contact Smith Brothers Junk Removal . 262-613-7598 www.smithbrosjunk.com

Community Partners


KRUEGER COMMUNICATIONS INC. | A: 12515 KNOLL RD, ELM GROVE WI | P: 262.786.9297



Library News and Programs

August 2025


13600 Juneau Blvd., Elm Grove, WI 53122
262-782-6717 | elmgrovelibrary.org




First Friday Films: Wonka / Friday, August 1, 1:00 p.m. A matinee film series for adults. On the first Friday of every month, a new release movie is screened in the O'Neill Room at 1:00 p.m. Skip the wait list and see it on a big screen! Everyone's invited, and bring a friend. Popcorn and water provided. Movie ratings and contents vary. Not all movies will be suitable for all audiences. Free admission, no RSVP needed. August's move is *Wonka* starring Timothee Chalamet.

Portraits in the Struggle of Change: Frida Kahlo / Tuesday, August 12, 6:30 p.m.

Presented by Karri Fritz-Klaus of Cornerstone Symposium, this engaging art history program explores the powerful work of Frida Kahlo—one of Mexico's most iconic and influential artists. While focusing on her vivid self-portraits, the program also delves into her broader body of work, revealing how she used art to confront identity, pain, politics, and cultural heritage. To this day, Kahlo's fearless creativity continues to challenge norms and inspire change.



This is the fourth lecture in a five-part series, "Revolution Pictured in Frames." Mark your calendar for the final presentation (9/9: William Blake). Free to attend. No registration required.




Foraging in Wild Wisconsin / Monday, August 18, 6:00 p.m.

Join Ben of Pink Teepee Farms for an immersive journey into the forests and fields of Wisconsin. This hands-on program explores how to safely identify and harvest wild edible mushrooms and plants. Learn tips, techniques, and local knowledge for sustainable foraging, while deepening your connection to the natural world. Free to attend. No registration required.

Junk Journaling / Tuesday, August 26, 1:00 p.m.

Discover the joy of self-expression through junk journaling in this creative, hands-on workshop led by artist Bonnie Gunelius. Whether you're new to journaling or a seasoned creator, this informal session invites you to explore your inner world using writing, collage, paint, and more. All supplies are provided—just bring your imagination and a willingness to create a one-of-a-kind book that reflects your life, passions, and memories. Free to attend. No registration required. Participants must bring their own journals/notebooks, but all other supplies will be provided.



ELM GROVE BEAUTIFICATION COMMITTEE

WINTER LECTURE SERIES

2025-2026

SEPT 17
2025

CHARLIE KOENEN
THE STORY OF MANKIND'S MOST
IMPORTANT POLLINATORS

NOV 12
2025

BOB TAMM
BLUEBIRD CONSERVATION
LAKE MICHIGAN BIRD OBSERVATORY
BIRD CITY WISCONSIN

JAN 21
2026

MOVIE NIGHT
A CHICKADEE'S GUIDE TO
GARDENING

MAR 18
2026

DR. JAMES CRALL
NEONICOTINOIDS AND THEIR
EFFECT ON OUR WORLD

ELM GROVE LIBRARY O'NEILL ROOM
6:30PM



EGBEAUTIFICATION@GMAIL.COM



Young Writers



Photo courtesy: Jennifer Black

Members of Team B.U.I.L.D. celebrate their success at an international competition.

Team B.U.I.L.D. 44199 Brings Home the Waffle!

By Elizabeth Black from Team B.U.I.L.D. - 7th Grade, Pilgrim Park Middle School

The journey to the WPI Open First Lego League Invitational (WAFFLE) was full of memorable moments for Elmbrook FLL team B.U.I.L.D. 44199. Held June 13–15, this international open event brought together over 100 teams from around the world to showcase innovation, compete in the season robot game, and celebrate the 2024-25 FLL season. The trip was made possible through incredible community support, with the team raising \$9,500 through donations, a silent auction and cheese sales. Support also came from two graduated teammates who gave pep talks, and a sibling who stepped in as a last-minute substitute!

The team showed flexibility and creativity, like when a Niagara Falls poncho was repurposed to keep rain from shorting out the electronics on their engineering innovation project as they walked to the judging rooms across campus. Beyond competition, the team collected **577 Acts of Kindness** for charity through the Daniel Gives Back initiative.

All the hard work paid off: the team earned a **WAFFLE Trophy as an Innovation Project Finalist** and shared in the fun and spirit of the event. That included a ridiculous number of waffles created, eaten and gifted! It was a truly inspiring and unforgettable experience that showcased what teamwork, creativity and community can achieve.

Congrats to team B.U.I.L.D. 44199!

News Briefs

Save the Date! Beautification Committee Announces Winter Lecture Series

By Tyler Beckley

The Elm Grove Beautification Committee is proud to announce the finalized schedule for the fifth season of its beloved Winter Lecture Series. It has an exciting mix of educational and entertaining events, all of which are just a short walk or drive from your home. This year's series will continue with its mission of bringing the community together through thought-provoking events from amazing speakers and cozy gatherings throughout some of the coldest months of the year.

One of the highlights this season is a movie night complete with popcorn, inviting attendees to come and enjoy a nice calm and relaxing event while staying warm inside the O'Neill Room at the Elm Grove Library. Other events will feature expert speakers across a range of topics: from insects to insecticides and how they help or harm our environment.

No RSVP or any kind of registration in advance is required, making the series just as accessible as it is going to be engaging. You can just show up, find a seat, and enjoy.

In addition to the enriching content that you can learn, the committee has added a fun twist to select events—there will be giveaways in which special prizes will be up for grabs.

The Winter Lecture Series has become something of a staple on the community calendar for the last 5 years. It offers residents an opportunity to learn and connect, all without having to brave any kind of long commute or pay absurdly expensive ticket prices.

So, keep your eye on the Elm Grove Beautification Committee's updates on the village website or in our monthly email. Whether you're a lifelong resident or new to the neighborhood, this winter's lecture series is the perfect reason to step out, stay informed, and be inspired, without ever leaving Elm Grove.

ADVERTISE!

Promote your Business, Organization,
Club, Event, School, Church,
Items for Sale,
Job Opportunities, etc.

Request a Rate Sheet & Reserve Space
E-mail: elmgrovenews@yahoo.com
OR Call: (262) 782-6193

Young Writers & Reporters



Love

By Hebela Ayalew

Sixth Grade, Brookfield Academy

There is a power like a dove
And its name is love
It proves me wrong
When I think I'm not strong
It's the whisper between husband and wife
Between dreams and life
It's the love of a mother to her child
And it's anything but mild
The reason we are so happy-
Some might call me sappy
But its power is a dove
And its name is love.

Fuzzle's Cab Ride

By Ayush Dadgale

Brookfield East High School - Senior

(NOTE: Fuzzle is a stuffed animal I've had since I was six, and this poem describes my experience moving to Brookfield from a place far away, years ago.)

The highway's electric river carries us,
Fuzzle's twin button eyes reflecting
The Midwest's winter constellations:
BP suns, Culver's moons,
the blinking red giant of a radio tower.

The cab smells of pine air freshener
and old snow. Outside,
abandoned factories stand like wardens,
their broken windows chewing
on scraps of the wind.
Fuzzle's left ear twitches
when we pass the first dead deer,
its frozen belly open to stars
that aren't the ones we knew.

The driver coughs into his collar,
changes radio stations until
a Bollywood remix stutters
through static. Fuzzle's nose
presses a cloud against glass
as we cross the Fox River,
black water moving beneath ice
like a sentence half-remembered.

Brookfield arrives in pharmacy lights,
parking lots vast as Maharashtra's fields.
When the meter stops its ticking,
I check his weary eyes, yes,
both eyes secure, though the right one
now sees only American darkness,
the left still wet with monsoon light.

I zip him inside my coat where
the tremble could be jetlag,
could be the engine's last vibration,
could be the way his stitches
pull slightly tighter here,
as if the cold has hands
and wants to undo
what I sewed.



WANTED: Young Writers & Reporters!

Students in Grades K-12
are invited to submit
for consideration:

- NEWS ITEMS / INTERVIEWS
- SHORT STORIES
- POETRY

(about 200 words maximum)

*Send items (within an email
or as a Word document) to:
elmgrovenews@yahoo.com

Subject line: Young Writers

Include the writer's name, grade
level & school / homeschool

Old(er) Writers

*Readers (age 18+) may submit poetry, short fiction, life stories / reminiscences
(200 words maximum) to: elmgrovenews@yahoo.com or
EGNI, 14420 Watertown Plank Rd., Elm Grove, WI 53122

Our Lady of Champion

By Jerry Brunner

(Note: The National Shrine of Our Lady of
Champion, on twelve acres peaceful farmland
in northeastern Wisconsin, preserves the spot
where the Queen of Heaven appeared to a
young Belgian immigrant named Adele Brise
(Brice) in 1859.)

There once was a time,
Today there's a shrine,
to October nine,
eighteen fifty-nine.

Mary told her to teach
that salvation's in reach
and help many sinners
convert to good winners.

With nothing to fear
and some lessons to tell,
Mary offered help
then Adele did quite well.

The Marian Apparition
is worthy of belief
and for today's crazy world
offers true hope and relief.



Baby or Old Lady

By Santosh Gupta

Is she baby or an old lady?
She eats, drinks like an old lady
She moves like an old lady
She likes to play with toys
She herself a toy for old lady
The old lady loves music
The baby loves music
She lay on her bed
Foot on the bed, leg on knee
Pacifier in mouth, enjoy music
Is she a philosopher or tiny baby?
She acts like an old lady

Be Gentle

By Sister Marie Le Clerc Laux, SSND

Be gentle with life.
Touch with tenderness
the soft unfolding of the layered bud,
and lightly, even
the crusty pinecone
on its wooden way to manhood.
Gaze with quiet eyes
on mushroom's thousand-thin
accordion pleats
beneath its tent,
at dandelion's golden spears
sardined in green
until the bursting time.

Be gentle with life.
Be gentle with all living things.
Miracles are at work.



A Composer's thought

By Gary Kerslake

In days gone by when thought was clear,
I use to think that I could hear,
The sounds that none believe exist,
And yet I heard and still insist,
To feel or sense the tone not there,
Is a sound of which none can compare.
O please don't let me cease to dream,
For if I stop, thus ends life's scheme.

Coloring for Kids (of ALL ages!)



Read Current & many past editions of
The Elm Grove News-Independent
at www.elmgrove.news Click on Archive.



News Briefs

Huntington’s Disease Society Event to be Held

(BROOKFIELD) - The Wisconsin Chapter of the Huntington’s Disease Society of America (HDSA) will host the **Team Hope Walk Jim Christus Memorial Run/ Walk** - Wisconsin on Sunday, August 24th at Fox Brook Park, 2925 N. Barker Rd. Brookfield, WI 53045. Registration starts at 9:00 a.m. and the event starts at 10:00 a.m. All proceeds support HDSA’s mission to improve the lives of people affected by Huntington’s disease (HD) and their families.

Team Hope is HDSA’s largest national grassroots fundraising event, which takes place in over 100 cities across the U.S. and has raised more than \$28 million for HD since its inception in 2007. Thousands of families, friends, co-workers, neighbors, and communities walk together each year to support HDSA’s mission to improve the lives of people affected by HD and their families.

For more information about the event, contact Shana Verstegen (shana@shanaverstegen.com).

See online registration / donation information at <https://wisconsin.hdsa.org/events/2025-team-hope-jim-christus-memorial-walk>.

NOTE: Huntington’s disease (HD) is a fatal genetic disorder that causes the progressive breakdown of nerve cells in the brain. It deteriorates a person’s physical and mental abilities during their prime working years and has no cure. Every child of a parent with HD has a 50/50 chance of inheriting the faulty gene. Today, there are approximately 41,000 symptomatic Americans and more than 200,000 at-risk of inheriting the disease. The symptoms of HD are described as having ALS, Parkinson’s and Alzheimer’s – simultaneously. The Huntington’s Disease Society of America was founded in 1967 by Marjorie Guthrie, the wife of legendary folk singer Woody Guthrie. Woody died from HD complications when he was only 55 years old, but the Guthrie family legacy lives on at HDSA to this day.



C X A G N B H R C I Y J D L M K R A P E M E H T
A A T E P A R T I E S V F R U G A D H B T I J N
M L R H J W K K E Y S E I L F E R I F B L E U K
P B M N T K E O Y F P O U Q I W X R I H F S M O
I L D V I C E C R E A M R X S D W Y R G L Y P Z
N A P B O V C G P D S H E R H F S S E G I V R H
G R P H U L A H O O P S I J I J J A W K P H O L
M O D N A O F L O P G Q J R N S K N O T F U P V
W L F X P Y J Z L A A W E S G B L D R C L P E D
E L H F J G O H X I Q J W E K R L A K G O M H N
O E B S P C A U G U S T Q I C R X L S U P Z T M
V R G U H T D E R T H J K V L O H S B T S D R G
D C H N R V J T N C H A R O M H R L E E D E A F
P O P S I C L E S T T Y U M O Y L K K C I N H G
E A X C C W E T Y K C S G N A E M I E F A H A Q
S S T R N O N N E G H W O E V X B P A R A D E S
H T U E A D J U L Y R I B J R K E Y M M G H E V
A E S E T D F F Q W T M E R E T A Y U I H S O P
A R S N A D F G H A J M K L L Z C X C V S B N S
M Q W E L R T U C T I I O P K A H S D A A F G C
H J K L I Z X A C V B N N M N Q R W L E L N U I
R T Y E E U V I O P A G S D I F G G H J P A J N
Z X N C V B N F D H J T R H R J N K L E S G W C
I U E R K S E N O C W O N S P U P C I H G E W I
J W H C O O K O U T S W E E S D L K I J F M D P

AUGUST
BEACH
BIKES
CAMPING
CARNIVAL
COOKOUTS
FIREFLIES
FIREWORKS
FISHING
FLIPFLOPS

FUN
HULA HOOPS
ICE CREAM
JULY
JUMPROPE
JUNE
MOVIES
PARADES
PARTIES
PICNICS
POOL

POPSICLES
ROLLERCOASTER
SANDALS
SPLASH
SPRINKLER
SNOWCONES
SUNGLASSES
SUNSCREEN
SWIMMING
THEME PARK
VACATION

Public Safety Reports

From the files of the Elm Grove Police, Fire, and Emergency Services Depts.

Elm Grove Residents: Register Your Bike or E-Bike Today!

Do you live in Elm Grove and own a bicycle or e-bike? Don’t forget to register it with the Elm Grove Police Department! Per Village Ordinance §101-2, all resident-owned bikes and e-bikes operated in the Village must be licensed.

- One-time registration
- Non-expiring license sticker
- \$8 fee
- Improves recovery if lost or stolen

Why license your ride?

- Helps officers quickly return lost or stolen bikes
- Ensures bikes and e-bikes are in safe, working condition (a brief inspection may be done)
- Confirms your bike is legal for use on Village parks and pathways

How to register:

- Visit the Elm Grove Police Department
- Complete a short application
- Pay the \$8 one-time fee
- Receive your non-expiring license sticker and attach it to your bicycle or e-bike

Safety Reminder:

All riders must follow traffic laws. Bikes and e-bikes must have proper lighting after dark, yield to pedestrians, and be kept in safe operating condition.

Let’s keep Elm Grove safe, connected, and bike-friendly!

Attempt to Identify – Suspicious Activity

Between 1:30 a.m. and 3:00 a.m. on Thursday, July 18, multiple residents in Elm Grove reported a person approaching homes, ringing doorbells, and in some cases pounding on doors before fleeing the area. One incident was captured on video, showing a subject wearing a Nike hoodie and a mask covering their face.

While this may appear to some as a prank, it understandably caused alarm for residents—especially during overnight hours. It’s also possible this behavior was intended to test whether homes were occupied.

Elm Grove officers are actively reviewing footage and seeking to identify the individual involved. If you have any relevant video or information, please contact the **Elm Grove Police Department at 262-786-4141**.

Community Wish Lists

The FOOD Pantry Serving Waukesha County

Donations can be dropped off at The Food Pantry, 1301 Sentry Drive, Waukesha, 53186. Donations by check are also welcome. Call (262) 542-5300.Top of Form

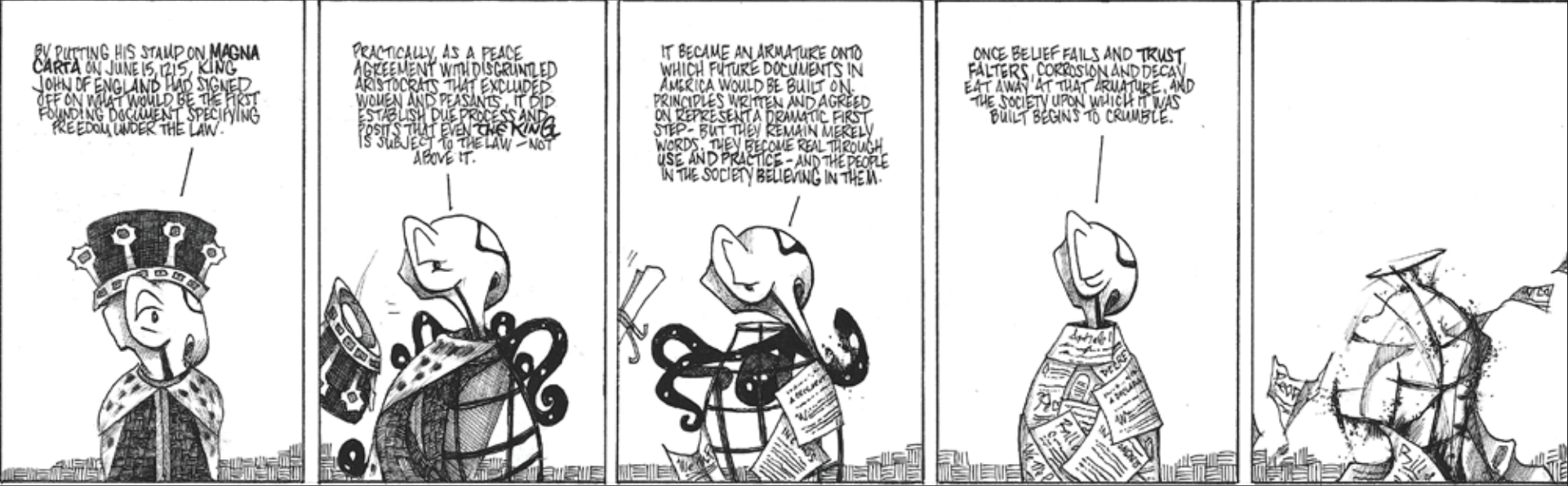
Hosting a food drive with your congregation, school, community group, neighborhood, or workplace is easy to do and makes a big impact. Call the Food Resource Manager at (262) 522-2374.

Letters to the Editor

NOTE: Letters (150 words or less) regarding issues of concern to the Elm Grove / Elmbrook / Waukesha County community will be considered for publication on a space-available basis. Submissions must include the writer’s name, community of residence, phone #.

E-mail: elmgrovenews@yahoo.com (Subject line: Letters to the Editor)
or Mail: EGNI, 14420 Watertown Plank Road, Elm Grove, WI 53122-2423.

MR. HUGH’S HISTORY by Drew Sternitzky @mrhughshistory on Instagram



News Briefs



This past month your Elm Grove Invasive Species Task Force battled through some high heat to help make our public spaces more beautiful and healthy. If you are looking for a way to spend **one hour** of your week making a difference in your community--reach out to EGBeautification@gmail.com to be included.

Green is Good!



An assessment helped the Jablonski family select their preferred solar panel location and decide on the black mesh squirrel guard.

Thinking About Solar? Get Answers with a Free Assessment

By The Elm Grove Green Team

If you’re considering solar power for your home in 2025, you haven’t missed your chance! There’s still time to get your free assessment and see if your home is a good fit. [Grow Solar](#), a program from the [Midwest Renewable Energy Association](#), is helping Waukesha County homeowners and small businesses make the switch and save through group-buy discounts and expert support.

“We received a lot of good information from our solar assessment,” said **Fran Jablonski**, an Elm Grove resident who took advantage of the 2024 solar group buy. “It helped us visualize exactly where the panels would be, and financially, there were no surprises.”

The Jablonskis say they are thrilled with the financial payback, but that’s not the only reason they had solar panels installed. “Reducing our carbon footprint is important to us. We garden and compost, and help the Beautification Committee with native plants and invasive species. Solar helps us do even more.”

To find out more or schedule your free assessment, contact Grow Solar at info@growsolar.org, or 715-900-2485. You can still turn sunlight into savings for your home!

Elm Grove’s Recycling Rockstars

Shoutout to the awesome neighbors at 13120 Dunwoody Drive, 13645 Underwood River, and 12600 Gremoor Drive! Our hardworking crew from JOHNS Disposal says these folks are doing an amazing job cleaning what they recycle and optimizing their waste-to-recycling ratio. Not sure what goes in your blue bin? Check the dos and don’ts at johnsdisposal.com/recycling-information.

Local Sports



Golfers (Left to right) **Phil Jaquith, Mike Beck, Dave Gross, and Joe Harwood** at the EEF event.

Elmbrook Education Foundation Hosts Successful 11th Annual Golf Open

(BROOKFIELD) - More than 200 golfers came together on July 17th for a day filled with golf, community, and purpose—all in support of the LAUNCH program in Elmbrook high schools. This year’s event exceeded expectations in every way: record-breaking sponsorships, an overwhelming number of silent auction donations, and a turnout that made it our most successful Golf Open yet.

“The success of our 11th Annual Golf Open is a true testament to the power of our community. With nearly 200 golfers, the generous sponsors, dedicated volunteers, and the incredible contributions from our LAUNCH students and local businesses, this was our most successful outing yet. We’re proud to support the LAUNCH program and grateful to everyone who made this event a success,” said **Stephanie Huff**, EEF Golf Open Chair.

Three LAUNCH students, (**Justin Hong** from Brookfield East High School and **Miles McMath and Moulik Soni** from Brookfield Central High School) played a key role in the planning and execution of this event, working closely with Stephanie and Executive Director **Beth Dobrzynski** throughout the spring semester. Their responsibilities included reaching out to past and current mentors to invite participation and donations, writing personalized thank-you notes, assembling activity packs, researching local events for insights, and supporting event marketing via social media, press releases, and video content.

EEF was organized in 1958 to award scholarships to select Brookfield High School graduates. In 1999, the Foundation’s mission expanded to include teacher grants for innovative projects that benefit all students and raise money to support and strengthen outstanding learning ideas that improve the overall educational quality of our public schools. EEF has awarded more than \$1,700,000 in scholarships and in excess of \$845,000 in grants which enhance and extend the established curriculum and support projects that are beyond the district’s budget.



A-D-V-E-R-T-I-S-E

*Products

*Services

*Real Estate for Sale or Rent

*Events

*Employment Opportunities

*Fundraisers

*Candidacy for Public Office & More

in

The *ELM GROVE* NEWS-INDEPENDENT

Request a RATE SHEET & RESERVE SPACE today!

E-mail: elmgrovenews@yahoo.com
or Call: (262) 782-6193

MAINSTAGE



JULIAN LAGE

FRIDAY, AUGUST 15

7:30PM



Grammy nominated guitarist and child prodigy, Julian Lage, has played alongside legends such as Carlos Santana, Herbie Hancock and Pat Metheny. He has earned a reputation as one of the most versatile and virtuosic musicians of his generation. Join us on August 15 to experience his genre-blending approach that spans jazz, classical, pop, and Americana.

Tickets at www.wilson-center.com • Box Office 262-781-9520 • 3270 Mitchell Park Drive, Brookfield



We **THANK** all of our ADVERTISERS & these

Friends of *The News*

- *Silver Spur BBQ
- *Dawn Tenant-Czysz
- *Tom & Jane Dwyer
- *Anne Du Puy
- *John Kuenzle & Kate Kuenzle
- *Kiwanis Club of Elm Grove – Golden K
- *Gary McWithey Concert Series at Brookfield Congregational Church UCC
- *Geri Fotsch
- *Jen Studebaker
- *The Lange Family
- *Bruce & Susan Davidson
- *Lacey, Herbie, Gus Gus & Toby
- *A Faithful Reader
- *Anonymous Readers

for helping to Sponsor this edition.

Do you appreciate the local news, features, and information that ***The News-Independent*** provides?

Add your name to the list of our valued “Friends of *The News*” supporters!

(Complete and submit the “Friends” form, today!)

Freedom of the Press is Essential. Community News Matters.

Support Your Local Newspaper!

by becoming one of our valued

Friends of *The News*

Sponsor Coverage of hyper-local **NEWS & INFORMATION.**

* Sponsors’ names are published in every issue in recognition of their support.

QUESTIONS: E-mail: elmgrovenews@yahoo.com OR Call (262) 782-6193

*To become a **Friends of *The News*** sponsor, complete & mail this form + check (payable to *Elm Grove News-Independent LLC*) to: Friends of *The News*, 14420 Watertown Plank Rd., Elm Grove, WI 53122

Name(s) _____

Address _____

City _____ State _____ Zip code _____

Phone # _____ E-mail: _____

COMMENTS ABOUT THE NEWSPAPER:

* **I/We want to help sponsor *The News-Independent*:**

* \$10.00 per issue x _____ issues = \$ _____

* Additional contribution = \$ _____

A check for a total of \$ _____ is enclosed.